

**Anti-CD91 (pS4520) Antibody**  
Rabbit polyclonal antibody to CD91 (pS4520)  
Catalog # AP61095

## Specification

---

### Anti-CD91 (pS4520) Antibody - Product Information

Application	WB, E
Primary Accession	<a href="#">O07954</a>
Other Accession	<a href="#">O91ZX7</a>
Reactivity	Human, Mouse, Rat
Host	Rabbit
Clonality	Polyclonal
Calculated MW	504606

### Anti-CD91 (pS4520) Antibody - Additional Information

Gene ID 4035

#### Other Names

A2MR; APR; Prolow-density lipoprotein receptor-related protein 1; LRP-1; Alpha-2-macroglobulin receptor; A2MR; Apolipoprotein E receptor; APOER; CD91

#### Target/Specificity

Recognizes endogenous levels of CD91 (pS4520) protein.

#### Dilution

WB~~WB (1/500 - 1/1000)

E~~WB (1/500 - 1/1000)

#### Format

Liquid in 0.42% Potassium phosphate, 0.87% Sodium chloride, pH 7.3, 30% glycerol, and 0.09% (W/V) sodium azide.

#### Storage

Store at -20 °C. Stable for 12 months from date of receipt

### Anti-CD91 (pS4520) Antibody - Protein Information

Name LRP1 ([HGNC:6692](#))

Synonyms A2MR, APR

#### Function

Endocytic receptor involved in endocytosis and in phagocytosis of apoptotic cells (PubMed:<a href="http://www.uniprot.org/citations/11907044" target="\_blank">11907044</a>, PubMed:<a href="http://www.uniprot.org/citations/12713657" target="\_blank">12713657</a>). Required for early embryonic development (By similarity). Involved in cellular lipid homeostasis. Involved in the plasma clearance of chylomicron remnants and activated LRPAP1 (alpha 2-macroglobulin), as well

as the local metabolism of complexes between plasminogen activators and their endogenous inhibitors. Acts as an LRPAP1 alpha-2- macroglobulin receptor (PubMed:<a href="http://www.uniprot.org/citations/1702392" target="\_blank">1702392</a>, PubMed:<a href="http://www.uniprot.org/citations/26142438" target="\_blank">26142438</a>). Acts as TAU/MAPT receptor and controls the endocytosis of TAU/MAPT as well as its subsequent spread (PubMed:<a href="http://www.uniprot.org/citations/32296178" target="\_blank">32296178</a>). May modulate cellular events, such as APP metabolism, kinase-dependent intracellular signaling, neuronal calcium signaling as well as neurotransmission (PubMed:<a href="http://www.uniprot.org/citations/12888553" target="\_blank">12888553</a>).

#### Cellular Location

[Low-density lipoprotein receptor-related protein 1 85 kDa subunit]: Cell membrane; Single-pass type I membrane protein Membrane, coated pit [Low-density lipoprotein receptor-related protein 1 intracellular domain]: Cytoplasm Nucleus. Note=After cleavage, the intracellular domain (LRPICD) is detected both in the cytoplasm and in the nucleus.

#### Tissue Location

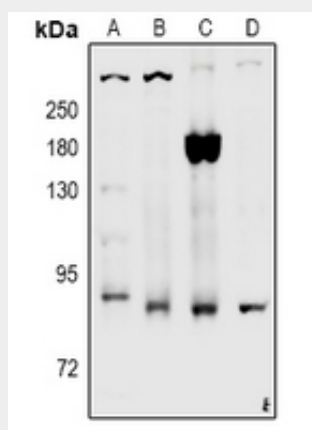
Most abundant in liver, brain and lung.

#### Anti-CD91 (pS4520) Antibody - Protocols

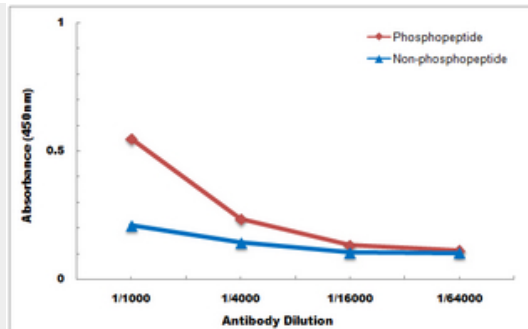
Provided below are standard protocols that you may find useful for product applications.

- [Western Blot](#)
- [Blocking Peptides](#)
- [Dot Blot](#)
- [Immunohistochemistry](#)
- [Immunofluorescence](#)
- [Immunoprecipitation](#)
- [Flow Cytometry](#)
- [Cell Culture](#)

#### Anti-CD91 (pS4520) Antibody - Images



Western blot analysis of CD91 (pS4520) expression in rat brain (A), C6 (B), LO2 (C), HEK293T (D) whole cell lysates.



Direct ELISA antibody dose-response curve using Anti-CD91 (pS4520) Antibody. Antigen (phosphopeptide and non-phosphopeptide) concentration is 5 ug/ml. Goat Anti-Rabbit IgG (H&L) - HRP was used as the secondary antibody, and signal was developed by TMB substrate.

### **Anti-CD91 (pS4520) Antibody - Background**

KLH-conjugated synthetic peptide encompassing a sequence within the C-term region of human CD91. The exact sequence is proprietary.