

Anti-eNOS (pS615) Antibody
Rabbit polyclonal antibody to eNOS (pS615)
Catalog # AP61082**Specification**

Anti-eNOS (pS615) Antibody - Product Information

Application	WB
Primary Accession	P29474
Other Accession	P70313
Reactivity	Human, Mouse, Rat, Pig, Bovine, Dog
Host	Rabbit
Clonality	Polyclonal
Calculated MW	133275

Anti-eNOS (pS615) Antibody - Additional Information**Gene ID** 4846**Other Names**

Nitric oxide synthase endothelial; Constitutive NOS; cNOS; EC-NOS; Endothelial NOS; eNOS; NOS type III; NOSIII

Target/Specificity

Recognizes endogenous levels of eNOS (pS615) protein.

Dilution

WB~~WB (1/500 - 1/1000)

Format

Liquid in 0.42% Potassium phosphate, 0.87% Sodium chloride, pH 7.3, 30% glycerol, and 0.09% (W/V) sodium azide.

Storage

Store at -20 °C. Stable for 12 months from date of receipt

Anti-eNOS (pS615) Antibody - Protein Information**Name** NOS3 ([HGNC:7876](#))**Function**Produces nitric oxide (NO) which is implicated in vascular smooth muscle relaxation through a cGMP-mediated signal transduction pathway (PubMed: [1378832](http://www.uniprot.org/citations/1378832)). NO mediates vascular endothelial growth factor (VEGF)-induced angiogenesis in coronary vessels and promotes blood clotting through the activation of platelets.**Cellular Location**

Cell membrane. Membrane, caveola. Cytoplasm, cytoskeleton. Golgi apparatus. Note=Specifically

associates with actin cytoskeleton in the G2 phase of the cell cycle; which is favored by interaction with NOSIP and results in a reduced enzymatic activity

Tissue Location

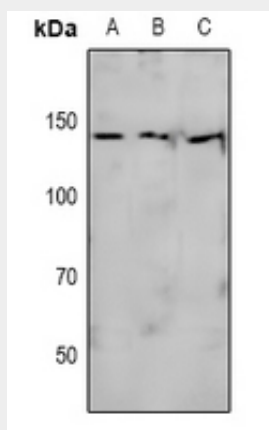
Platelets, placenta, liver and kidney.

Anti-eNOS (pS615) Antibody - Protocols

Provided below are standard protocols that you may find useful for product applications.

- [Western Blot](#)
- [Blocking Peptides](#)
- [Dot Blot](#)
- [Immunohistochemistry](#)
- [Immunofluorescence](#)
- [Immunoprecipitation](#)
- [Flow Cytometry](#)
- [Cell Culture](#)

Anti-eNOS (pS615) Antibody - Images



Western blot analysis of eNOS (pS615) expression in K562 (A), mouse spleen (B), rat spleen (C) whole cell lysates.

Anti-eNOS (pS615) Antibody - Background

KLH-conjugated synthetic peptide encompassing a sequence within the center region of human eNOS. The exact sequence is proprietary.