

Anti-TPH1 (pS58) Antibody
Rabbit polyclonal antibody to TPH1 (pS58)
Catalog # AP61076

Specification

Anti-TPH1 (pS58) Antibody - Product Information

| | |
|-------------------|---|
| Application | WB |
| Primary Accession | P17752 |
| Other Accession | P17532 |
| Reactivity | Human, Mouse, Rat, Rabbit, Chicken |
| Host | Rabbit |
| Clonality | Polyclonal |
| Calculated MW | 50985 |

Anti-TPH1 (pS58) Antibody - Additional Information

Gene ID 7166

Other Names

TPH; TPRH; TRPH; Tryptophan 5-hydroxylase 1; Tryptophan 5-monoxygenase 1

Target/Specificity

Recognizes endogenous levels of TPH1 (pS58) protein.

Dilution

WB~~WB (1/500 - 1/1000), IH (1/50 - 1/100)

Format

Liquid in 0.42% Potassium phosphate, 0.87% Sodium chloride, pH 7.3, 30% glycerol, and 0.09% (W/V) sodium azide.

Storage

Store at -20 °C. Stable for 12 months from date of receipt

Anti-TPH1 (pS58) Antibody - Protein Information

Name TPH1

Synonyms TPH, TPRH, TRPH

Function

Oxidizes L-tryptophan to 5-hydroxy-L-tryptophan in the rate-determining step of serotonin biosynthesis.

Tissue Location

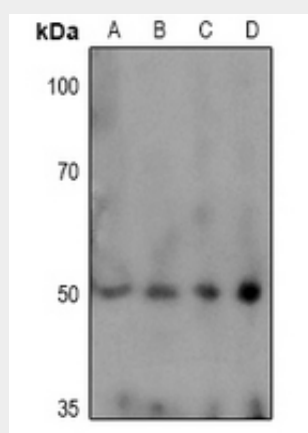
[Isoform 2]: Seems to be less widely expressed than isoform 1.

Anti-TPH1 (pS58) Antibody - Protocols

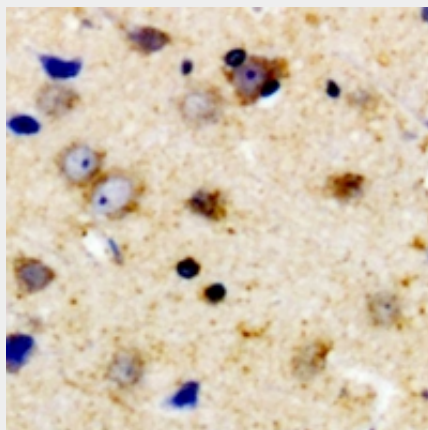
Provided below are standard protocols that you may find useful for product applications.

- [Western Blot](#)
- [Blocking Peptides](#)
- [Dot Blot](#)
- [Immunohistochemistry](#)
- [Immunofluorescence](#)
- [Immunoprecipitation](#)
- [Flow Cytometry](#)
- [Cell Culture](#)

Anti-TPH1 (pS58) Antibody - Images



Western blot analysis of TPH1 (pS58) expression in HEK293T (A), THP1 (B), MCF7 (C), SGC7901 (D) whole cell lysates.



Immunohistochemical analysis of TPH1 (pS58) staining in human brain formalin fixed paraffin embedded tissue section. The section was pre-treated using heat mediated antigen retrieval with sodium citrate buffer (pH 6.0). The section was then incubated with the antibody at room temperature and detected using an HRP conjugated compact polymer system. DAB was used as the chromogen. The section was then counterstained with haematoxylin and mounted with DPX.

Anti-TPH1 (pS58) Antibody - Background

KLH-conjugated synthetic peptide encompassing a sequence within the N-term region of human TPH1. The exact sequence is proprietary.