

**Anti-p57 Kip2 (pT310) Antibody**  
Rabbit polyclonal antibody to p57 Kip2 (pT310)  
Catalog # AP61075

## Specification

---

### Anti-p57 Kip2 (pT310) Antibody - Product Information

Application	WB, IF
Primary Accession	<a href="#">P49918</a>
Other Accession	<a href="#">P49919</a>
Reactivity	Human, Mouse
Host	Rabbit
Clonality	Polyclonal
Calculated MW	32177

### Anti-p57 Kip2 (pT310) Antibody - Additional Information

Gene ID 1028

#### Other Names

KIP2; Cyclin-dependent kinase inhibitor 1C; Cyclin-dependent kinase inhibitor p57; p57Kip2

#### Target/Specificity

Recognizes endogenous levels of p57 Kip2 (pT310) protein.

#### Dilution

WB~~WB (1/500 - 1/1000), IH (1/50 - 1/100), IF/IC (1/100 - 1/500)  
IF~~WB (1/500 - 1/1000), IH (1/50 - 1/100), IF/IC (1/100 - 1/500)

#### Format

Liquid in 0.42% Potassium phosphate, 0.87% Sodium chloride, pH 7.3, 30% glycerol, and 0.09% (W/V) sodium azide.

#### Storage

Store at -20 °C. Stable for 12 months from date of receipt

### Anti-p57 Kip2 (pT310) Antibody - Protein Information

Name CDKN1C

Synonyms KIP2

#### Function

Potent tight-binding inhibitor of several G1 cyclin/CDK complexes (cyclin E-CDK2, cyclin D2-CDK4, and cyclin A-CDK2) and, to lesser extent, of the mitotic cyclin B-CDC2. Negative regulator of cell proliferation. May play a role in maintenance of the non-proliferative state throughout life.

#### Cellular Location

Nucleus.

### Tissue Location

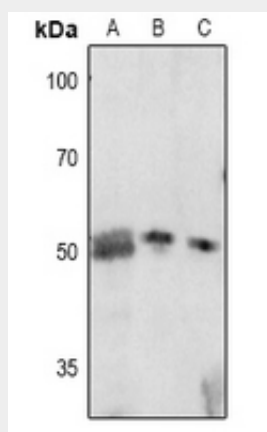
Expressed in the heart, brain, lung, skeletal muscle, kidney, pancreas and testis. Expressed in the eye. High levels are seen in the placenta while low levels are seen in the liver

### Anti-p57 Kip2 (pT310) Antibody - Protocols

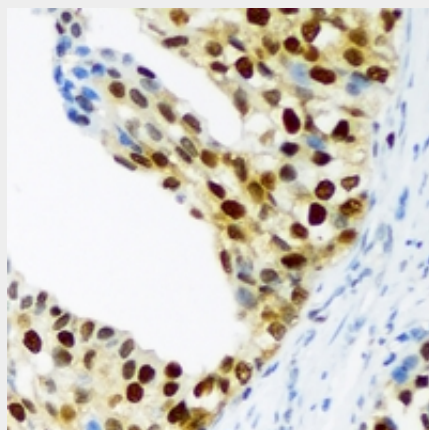
Provided below are standard protocols that you may find useful for product applications.

- [Western Blot](#)
- [Blocking Peptides](#)
- [Dot Blot](#)
- [Immunohistochemistry](#)
- [Immunofluorescence](#)
- [Immunoprecipitation](#)
- [Flow Cytometry](#)
- [Cell Culture](#)

### Anti-p57 Kip2 (pT310) Antibody - Images

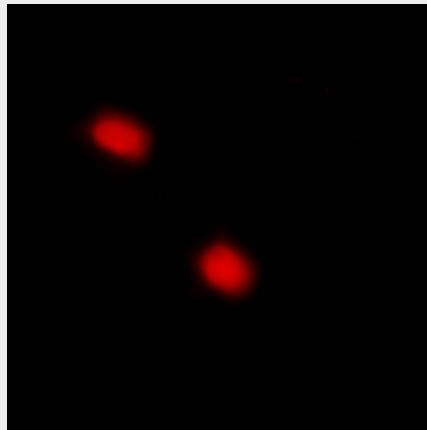


Western blot analysis of p57 Kip2 (pT310) expression in K562 (A), HeLa (B), HEK293T (C) whole cell lysates.



Immunohistochemical analysis of p57 Kip2 (pT310) staining in human prostate cancer formalin fixed paraffin embedded tissue section. The section was pre-treated using heat mediated antigen retrieval with sodium citrate buffer (pH 6.0). The section was then incubated with the antibody at room temperature and detected using an HRP conjugated compact polymer system. DAB was

used as the chromogen. The section was then counterstained with haematoxylin and mounted with DPX.



Immunofluorescent analysis of p57 Kip2 (pT310) staining in HuvEc cells. Formalin-fixed cells were permeabilized with 0.1% Triton X-100 in TBS for 5-10 minutes and blocked with 3% BSA-PBS for 30 minutes at room temperature. Cells were probed with the primary antibody in 3% BSA-PBS and incubated overnight at 4 °C in a humidified chamber. Cells were washed with PBST and incubated with Alexa Fluor 647-conjugated secondary antibody (red) in PBS at room temperature in the dark.

#### **Anti-p57 Kip2 (pT310) Antibody - Background**

KLH-conjugated synthetic peptide encompassing a sequence within the C-term region of human p57 Kip2. The exact sequence is proprietary.