

**Anti-C/EBP epsilon (pT74) Antibody**  
**Rabbit polyclonal antibody to C/EBP epsilon (pT74)**  
**Catalog # AP61071**

**Specification**

---

**Anti-C/EBP epsilon (pT74) Antibody - Product Information**

Application	WB, IF
Primary Accession	<a href="#">O15744</a>
Other Accession	<a href="#">O6PZD9</a>
Reactivity	Human, Mouse, Rat, SARS
Host	Rabbit
Clonality	Polyclonal
Calculated MW	30603

**Anti-C/EBP epsilon (pT74) Antibody - Additional Information**

**Gene ID** 1053

**Other Names**

CCAAT/enhancer-binding protein epsilon; C/EBP epsilon

**Target/Specificity**

Recognizes endogenous levels of C/EBP epsilon (pT74) protein.

**Dilution**

WB~~WB (1/500 - 1/1000), IH (1/50 - 1/100), IF/IC (1/100 - 1/500)

IF~~WB (1/500 - 1/1000), IH (1/50 - 1/100), IF/IC (1/100 - 1/500)

**Format**

Liquid in 0.42% Potassium phosphate, 0.87% Sodium chloride, pH 7.3, 30% glycerol, and 0.09% (W/V) sodium azide.

**Storage**

Store at -20 °C. Stable for 12 months from date of receipt

**Anti-C/EBP epsilon (pT74) Antibody - Protein Information**

**Name** CEBPE

**Function**

Transcriptional activator (PubMed: <http://www.uniprot.org/citations/26019275> target="\_blank">26019275</a>). C/EBP are DNA- binding proteins that recognize two different motifs: the CCAAT homology common to many promoters and the enhanced core homology common to many enhancers. Required for the promyelocyte-myelocyte transition in myeloid differentiation (PubMed: <http://www.uniprot.org/citations/10359588> target="\_blank">10359588</a>).

**Cellular Location**

Nucleus

#### Tissue Location

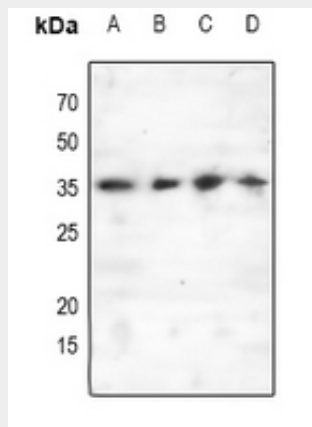
Strongest expression occurs in promyelocyte and late-myeloblast-like cell lines.

#### Anti-C/EBP epsilon (pT74) Antibody - Protocols

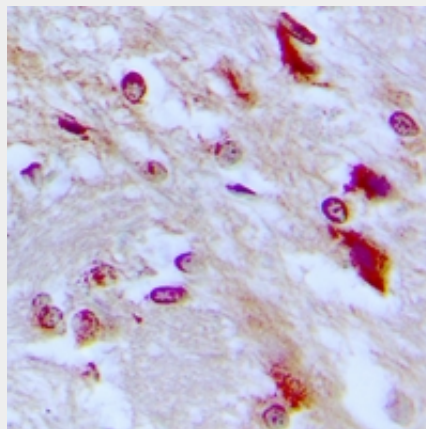
Provided below are standard protocols that you may find useful for product applications.

- [Western Blot](#)
- [Blocking Peptides](#)
- [Dot Blot](#)
- [Immunohistochemistry](#)
- [Immunofluorescence](#)
- [Immunoprecipitation](#)
- [Flow Cytometry](#)
- [Cell Culture](#)

#### Anti-C/EBP epsilon (pT74) Antibody - Images

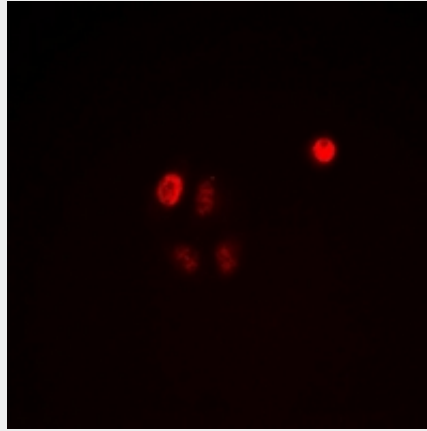


Western blot analysis of C/EBP epsilon (pT74) expression in Hela (A), mouse liver (B), Raw264.7 (C), rat liver (D) whole cell lysates.



Immunohistochemical analysis of C/EBP epsilon (pT74) staining in human brain formalin fixed paraffin embedded tissue section. The section was pre-treated using heat mediated antigen retrieval with sodium citrate buffer (pH 6.0). The section was then incubated with the antibody at

room temperature and detected using an HRP conjugated compact polymer system. DAB was used as the chromogen. The section was then counterstained with haematoxylin and mounted with DPX.



Immunofluorescent analysis of C/EBP epsilon (pT74) staining in HeLa cells. Formalin-fixed cells were permeabilized with 0.1% Triton X-100 in TBS for 5-10 minutes and blocked with 3% BSA-PBS for 30 minutes at room temperature. Cells were probed with the primary antibody in 3% BSA-PBS and incubated overnight at 4 °C in a humidified chamber. Cells were washed with PBST and incubated with Alexa Fluor 647-conjugated secondary antibody (red) in PBS at room temperature in the dark.

#### **Anti-C/EBP epsilon (pT74) Antibody - Background**

KLH-conjugated synthetic peptide encompassing a sequence within the center region of human C/EBP epsilon. The exact sequence is proprietary.