

**Anti-p16 ARC Antibody**  
Rabbit polyclonal antibody to p16 ARC  
Catalog # AP61055

### Specification

---

#### Anti-p16 ARC Antibody - Product Information

Application	WB
Primary Accession	<a href="#">O15511</a>
Other Accession	<a href="#">Q9CPW4</a>
Reactivity	Human, Mouse, Rat, Bovine
Host	Rabbit
Clonality	Polyclonal
Calculated MW	16320

#### Anti-p16 ARC Antibody - Additional Information

Gene ID 10092

#### Other Names

ARC16; Actin-related protein 2/3 complex subunit 5; Arp2/3 complex 16 kDa subunit; p16-ARC

#### Target/Specificity

Recognizes endogenous levels of p16 ARC protein.

#### Dilution

WB~~WB (1/500 - 1/1000)

#### Format

Liquid in 0.42% Potassium phosphate, 0.87% Sodium chloride, pH 7.3, 30% glycerol, and 0.09% (W/V) sodium azide.

#### Storage

Store at -20 °C. Stable for 12 months from date of receipt

#### Anti-p16 ARC Antibody - Protein Information

Name ARPC5

Synonyms ARC16

#### Function

Component of the Arp2/3 complex, a multiprotein complex that mediates actin polymerization upon stimulation by nucleation-promoting factor (NPF) (PubMed: [9230079](http://www.uniprot.org/citations/9230079)). The Arp2/3 complex mediates the formation of branched actin networks in the cytoplasm, providing the force for cell motility (PubMed: [9230079](http://www.uniprot.org/citations/9230079)). In addition to its role in the cytoplasmic cytoskeleton, the Arp2/3 complex also promotes actin polymerization in the nucleus, thereby regulating gene transcription

and repair of damaged DNA (PubMed:<a href="http://www.uniprot.org/citations/29925947" target="\_blank">29925947</a>). The Arp2/3 complex promotes homologous recombination (HR) repair in response to DNA damage by promoting nuclear actin polymerization, leading to drive motility of double-strand breaks (DSBs) (PubMed:<a href="http://www.uniprot.org/citations/29925947" target="\_blank">29925947</a>).

#### Cellular Location

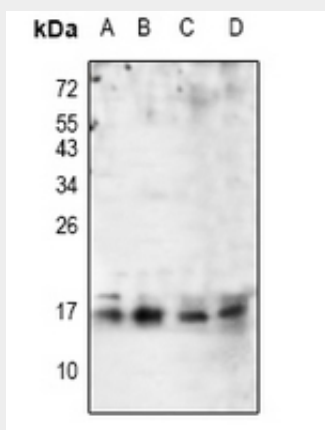
Cytoplasm, cytoskeleton. Cell projection. Nucleus

### Anti-p16 ARC Antibody - Protocols

Provided below are standard protocols that you may find useful for product applications.

- [Western Blot](#)
- [Blocking Peptides](#)
- [Dot Blot](#)
- [Immunohistochemistry](#)
- [Immunofluorescence](#)
- [Immunoprecipitation](#)
- [Flow Cytometry](#)
- [Cell Culture](#)

### Anti-p16 ARC Antibody - Images



Western blot analysis of p16 ARC expression in Hela (A), MCF7 (B), mouse embryo (C), rat ovary (D) whole cell lysates.

### Anti-p16 ARC Antibody - Background

KLH-conjugated synthetic peptide encompassing a sequence within the N-term region of human p16 ARC. The exact sequence is proprietary.