

Anti-Plasminogen HC A Antibody
Rabbit polyclonal antibody to Plasminogen HC A
Catalog # AP61045

Specification

Anti-Plasminogen HC A Antibody - Product Information

Application	WB
Primary Accession	P00747
Other Accession	P20918
Reactivity	Human, Mouse, Rat
Host	Rabbit
Clonality	Polyclonal
Calculated MW	90569

Anti-Plasminogen HC A Antibody - Additional Information

Gene ID 5340

Other Names
Plasminogen

Target/Specificity
Recognizes endogenous levels of Plasminogen HC A protein.

Dilution
WB~~WB (1/500 - 1/1000)

Format
Liquid in 0.42% Potassium phosphate, 0.87% Sodium chloride, pH 7.3, 30% glycerol, and 0.09% (W/V) sodium azide.

Storage
Store at -20 °C. Stable for 12 months from date of receipt

Anti-Plasminogen HC A Antibody - Protein Information

Name PLG

Function
Plasmin dissolves the fibrin of blood clots and acts as a proteolytic factor in a variety of other processes including embryonic development, tissue remodeling, tumor invasion, and inflammation. In ovulation, weakens the walls of the Graafian follicle. It activates the urokinase-type plasminogen activator, collagenases and several complement zymogens, such as C1 and C5. Cleavage of fibronectin and laminin leads to cell detachment and apoptosis. Also cleaves fibrin, thrombospondin and von Willebrand factor. Its role in tissue remodeling and tumor invasion may be modulated by CSPG4. Binds to cells.

Cellular Location

Secreted. Note=Locates to the cell surface where it is proteolytically cleaved to produce the active plasmin. Interaction with HRG tethers it to the cell surface

Tissue Location

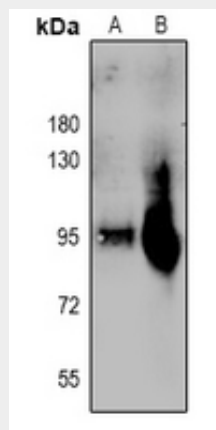
Present in plasma and many other extracellular fluids. It is synthesized in the liver

Anti-Plasminogen HC A Antibody - Protocols

Provided below are standard protocols that you may find useful for product applications.

- [Western Blot](#)
- [Blocking Peptides](#)
- [Dot Blot](#)
- [Immunohistochemistry](#)
- [Immunofluorescence](#)
- [Immunoprecipitation](#)
- [Flow Cytometry](#)
- [Cell Culture](#)

Anti-Plasminogen HC A Antibody - Images



Western blot analysis of Plasminogen HC A expression in PC12 (A), CT26 (B) whole cell lysates.

Anti-Plasminogen HC A Antibody - Background

KLH-conjugated synthetic peptide encompassing a sequence within the N-term region of human Plasminogen HC A. The exact sequence is proprietary.