

Anti-Desmoglein 1 Antibody
Rabbit polyclonal antibody to Desmoglein 1
Catalog # AP61028**Specification**

Anti-Desmoglein 1 Antibody - Product Information

Application	WB
Primary Accession	Q02413
Reactivity	Human, Mouse, Rat
Host	Rabbit
Clonality	Polyclonal
Calculated MW	113748

Anti-Desmoglein 1 Antibody - Additional Information**Gene ID** 1828**Other Names**

CDHF4; Desmoglein-1; Cadherin family member 4; Desmosomal glycoprotein 1; DG1; DGI; Pemphigus foliaceus antigen

Target/Specificity

Recognizes endogenous levels of Desmoglein 1 protein.

Dilution

WB~~WB (1/500 - 1/1000)

Format

Liquid in 0.42% Potassium phosphate, 0.87% Sodium chloride, pH 7.3, 30% glycerol, and 0.09% (W/V) sodium azide.

Storage

Store at -20 °C. Stable for 12 months from date of receipt

Anti-Desmoglein 1 Antibody - Protein Information**Name** DSG1**Synonyms** CDHF4**Function**

Component of intercellular desmosome junctions. Involved in the interaction of plaque proteins and intermediate filaments mediating cell-cell adhesion.

Cellular Location

Cell membrane {ECO:0000250|UniProtKB:Q7TSF1}; Single-pass type I membrane protein {ECO:0000250|UniProtKB:Q7TSF1} Cell junction, desmosome. Cytoplasm. Nucleus

Tissue Location

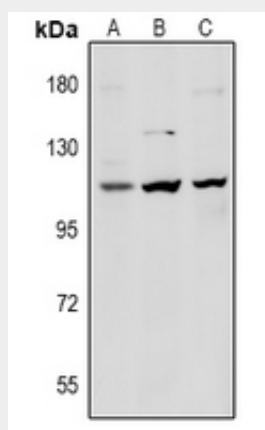
Epidermis, tongue, tonsil and esophagus.

Anti-Desmoglein 1 Antibody - Protocols

Provided below are standard protocols that you may find useful for product applications.

- [Western Blot](#)
- [Blocking Peptides](#)
- [Dot Blot](#)
- [Immunohistochemistry](#)
- [Immunofluorescence](#)
- [Immunoprecipitation](#)
- [Flow Cytometry](#)
- [Cell Culture](#)

Anti-Desmoglein 1 Antibody - Images



Western blot analysis of Desmoglein 1 expression in Beas2B (A), H9C2 (B), MEF (C) whole cell lysates.

Anti-Desmoglein 1 Antibody - Background

KLH-conjugated synthetic peptide encompassing a sequence within the center region of human Desmoglein 1. The exact sequence is proprietary.