

Anti-SLY1 Antibody
Rabbit polyclonal antibody to SLY1
Catalog # AP60994

Specification

Anti-SLY1 Antibody - Product Information

Application	WB
Primary Accession	Q8WVM8
Other Accession	Q8BRF7
Reactivity	Human, Mouse, Rat
Host	Rabbit
Clonality	Polyclonal
Calculated MW	72380

Anti-SLY1 Antibody - Additional Information

Gene ID 23256

Other Names

C14orf163; KIAA0917; STXBP1L2; Sec1 family domain-containing protein 1; SLY1 homolog; Sly1p; Syntaxin-binding protein 1-like 2

Target/Specificity

Recognizes endogenous levels of SLY1 protein.

Dilution

WB~~WB (1/500 - 1/1000)

Format

Liquid in 0.42% Potassium phosphate, 0.87% Sodium chloride, pH 7.3, 30% glycerol, and 0.09% (W/V) sodium azide.

Storage

Store at -20 °C. Stable for 12 months from date of receipt

Anti-SLY1 Antibody - Protein Information

Name SCFD1

Synonyms C14orf163, KIAA0917, STXBP1L2

Function

Plays a role in SNARE-pin assembly and Golgi-to-ER retrograde transport via its interaction with COG4. Involved in vesicular transport between the endoplasmic reticulum and the Golgi (By similarity).

Cellular Location

Cytoplasm. Endoplasmic reticulum membrane; Peripheral membrane protein Golgi apparatus,

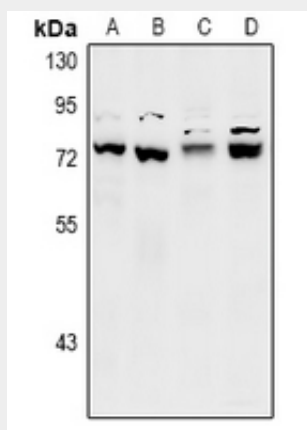
Golgi stack membrane; Peripheral membrane protein

Anti-SLY1 Antibody - Protocols

Provided below are standard protocols that you may find useful for product applications.

- [Western Blot](#)
- [Blocking Peptides](#)
- [Dot Blot](#)
- [Immunohistochemistry](#)
- [Immunofluorescence](#)
- [Immunoprecipitation](#)
- [Flow Cytometry](#)
- [Cell Culture](#)

Anti-SLY1 Antibody - Images



Western blot analysis of SLY1 expression in CT26 (A), PC12 (B), LO2 (C), HEK293T (D) whole cell lysates.

Anti-SLY1 Antibody - Background

KLH-conjugated synthetic peptide encompassing a sequence within the C-term region of human SLY1. The exact sequence is proprietary.