

Anti-RCL1 Antibody
Rabbit polyclonal antibody to RCL1
Catalog # AP60992

Specification

Anti-RCL1 Antibody - Product Information

Application	WB
Primary Accession	O9Y2P8
Other Accession	O9JJT0
Reactivity	Human, Mouse, Monkey, Bovine
Host	Rabbit
Clonality	Polyclonal
Calculated MW	40843

Anti-RCL1 Antibody - Additional Information

Gene ID 10171

Other Names

RNAC; RPC2; RPCL1; RTC2; RNA 3'-terminal phosphate cyclase-like protein

Target/Specificity

Recognizes endogenous levels of RCL1 protein.

Dilution

WB~~WB (1/500 - 1/1000)

Format

Liquid in 0.42% Potassium phosphate, 0.87% Sodium chloride, pH 7.3, 30% glycerol, and 0.09% (W/V) sodium azide.

Storage

Store at -20 °C. Stable for 12 months from date of receipt

Anti-RCL1 Antibody - Protein Information

Name RCL1 ([HGNC:17687](#))

Synonyms RNAC, RPC2, RPCL1, RTC2

Function

Part of the small subunit (SSU) processome, first precursor of the small eukaryotic ribosomal subunit. During the assembly of the SSU processome in the nucleolus, many ribosome biogenesis factors, an RNA chaperone and ribosomal proteins associate with the nascent pre- rRNA and work in concert to generate RNA folding, modifications, rearrangements and cleavage as well as targeted degradation of pre- ribosomal RNA by the RNA exosome (PubMed:34516797). Does not have cyclase activity (By similarity).

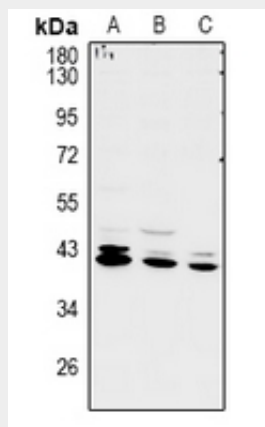
Cellular Location
Nucleus, nucleolus.

Anti-RCL1 Antibody - Protocols

Provided below are standard protocols that you may find useful for product applications.

- [Western Blot](#)
- [Blocking Peptides](#)
- [Dot Blot](#)
- [Immunohistochemistry](#)
- [Immunofluorescence](#)
- [Immunoprecipitation](#)
- [Flow Cytometry](#)
- [Cell Culture](#)

Anti-RCL1 Antibody - Images



Western blot analysis of RCL1 expression in LO2 (A), A549 (B), COS7 (C) whole cell lysates.

Anti-RCL1 Antibody - Background

KLH-conjugated synthetic peptide encompassing a sequence within the C-term region of human RCL1. The exact sequence is proprietary.