

**Anti-RAB18 Antibody**  
Rabbit polyclonal antibody to RAB18  
Catalog # AP60987

**Specification**

---

**Anti-RAB18 Antibody - Product Information**

Application	WB
Primary Accession	<a href="#">O9NP72</a>
Other Accession	<a href="#">P35293</a>
Reactivity	Human, Mouse
Host	Rabbit
Clonality	Polyclonal
Calculated MW	22977

**Anti-RAB18 Antibody - Additional Information**

**Gene ID** 22931

**Other Names**

Ras-related protein Rab-18

**Target/Specificity**

Recognizes endogenous levels of RAB18 protein.

**Dilution**

WB~~WB (1/500 - 1/1000)

**Format**

Liquid in 0.42% Potassium phosphate, 0.87% Sodium chloride, pH 7.3, 30% glycerol, and 0.09% (W/V) sodium azide.

**Storage**

Store at -20 °C. Stable for 12 months from date of receipt

**Anti-RAB18 Antibody - Protein Information**

**Name** RAB18

**Function**

The small GTPases Rab are key regulators of intracellular membrane trafficking, from the formation of transport vesicles to their fusion with membranes (PubMed: [24891604](http://www.uniprot.org/citations/24891604), PubMed: [30970241](http://www.uniprot.org/citations/30970241)). Rabs cycle between an inactive GDP-bound form and an active GTP-bound form that is able to recruit to membranes different sets of downstream effectors directly responsible for vesicle formation, movement, tethering and fusion (PubMed: [24891604](http://www.uniprot.org/citations/24891604), PubMed: [30970241](http://www.uniprot.org/citations/30970241)). Required for the localization of ZFYVE1 to lipid droplets and for

its function in mediating the formation of endoplasmic reticulum-lipid droplets (ER-LD) contacts (PubMed:<a href="http://www.uniprot.org/citations/30970241" target="\_blank">30970241</a>). Also required for maintaining endoplasmic reticulum structure (PubMed:<a href="http://www.uniprot.org/citations/24891604" target="\_blank">24891604</a>). Plays a role in apical endocytosis/recycling (By similarity). Plays a key role in eye and brain development and neurodegeneration (PubMed:<a href="http://www.uniprot.org/citations/21473985" target="\_blank">21473985</a>).

#### Cellular Location

Apical cell membrane {ECO:0000250|UniProtKB:P35293}. Lipid droplet. Endoplasmic reticulum membrane

#### Tissue Location

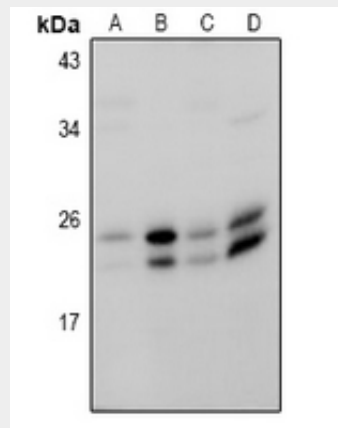
Ubiquitous.

### Anti-RAB18 Antibody - Protocols

Provided below are standard protocols that you may find useful for product applications.

- [Western Blot](#)
- [Blocking Peptides](#)
- [Dot Blot](#)
- [Immunohistochemistry](#)
- [Immunofluorescence](#)
- [Immunoprecipitation](#)
- [Flow Cytometry](#)
- [Cell Culture](#)

### Anti-RAB18 Antibody - Images



Western blot analysis of RAB18 expression in A549 (A), HeLa (B), BV2 (C), C6 (D) whole cell lysates.

### Anti-RAB18 Antibody - Background

KLH-conjugated synthetic peptide encompassing a sequence within the center region of human RAB18. The exact sequence is proprietary.