

Anti-MSX2 Antibody
Rabbit polyclonal antibody to MSX2
Catalog # AP60964

Specification

Anti-MSX2 Antibody - Product Information

Application	WB
Primary Accession	P35548
Other Accession	Q03358
Reactivity	Human, Mouse, Rat
Host	Rabbit
Clonality	Polyclonal
Calculated MW	28897

Anti-MSX2 Antibody - Additional Information

Gene ID 4488

Other Names

HOX8; Homeobox protein MSX-2; Homeobox protein Hox-8

Target/Specificity

Recognizes endogenous levels of MSX2 protein.

Dilution

WB~~WB (1/500 - 1/1000), IH (1/50 - 1/100)

Format

Liquid in 0.42% Potassium phosphate, 0.87% Sodium chloride, pH 7.3, 30% glycerol, and 0.09% (W/V) sodium azide.

Storage

Store at -20 °C. Stable for 12 months from date of receipt

Anti-MSX2 Antibody - Protein Information

Name MSX2

Synonyms HOX8

Function

Acts as a transcriptional regulator in bone development. Represses the ALPL promoter activity and antagonizes the stimulatory effect of DLX5 on ALPL expression during osteoblast differentiation. Probable morphogenetic role. May play a role in limb-pattern formation. In osteoblasts, suppresses transcription driven by the osteocalcin FGF response element (OCFRE). Binds to the homeodomain-response element of the ALPL promoter.

Cellular Location

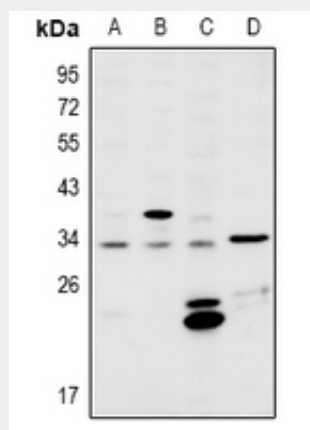
Nucleus.

Anti-MSX2 Antibody - Protocols

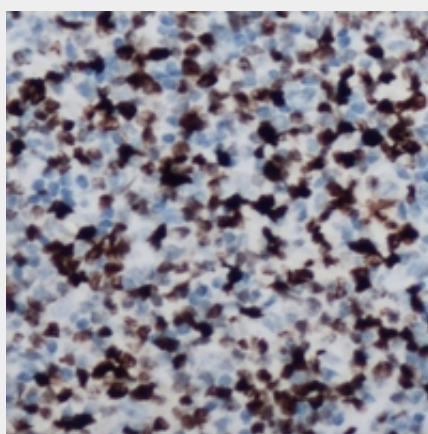
Provided below are standard protocols that you may find useful for product applications.

- [Western Blot](#)
- [Blocking Peptides](#)
- [Dot Blot](#)
- [Immunohistochemistry](#)
- [Immunofluorescence](#)
- [Immunoprecipitation](#)
- [Flow Cytometry](#)
- [Cell Culture](#)

Anti-MSX2 Antibody - Images



Western blot analysis of MSX2 expression in A549 (A), HEK293T (B), MEF (C), H9C2 (D) whole cell lysates.



Immunohistochemical analysis of MSX2 staining in human lymph node formalin fixed paraffin embedded tissue section. The section was pre-treated using heat mediated antigen retrieval with sodium citrate buffer (pH 6.0). The section was then incubated with the antibody at room temperature and detected using an HRP conjugated compact polymer system. DAB was used as the chromogen. The section was then counterstained with haematoxylin and mounted with DPX.

Anti-MSX2 Antibody - Background

KLH-conjugated synthetic peptide encompassing a sequence within the center region of human MSX2. The exact sequence is proprietary.