

Anti-CSGLCAT Antibody
Rabbit polyclonal antibody to CSGLCAT
Catalog # AP60945

Specification

Anti-CSGLCAT Antibody - Product Information

Application	WB
Primary Accession	O9P2E5
Reactivity	Human, Mouse, Rat
Host	Rabbit
Clonality	Polyclonal
Calculated MW	85948

Anti-CSGLCAT Antibody - Additional Information

Gene ID 54480

Other Names

CHSY3; CSGLCAT; KIAA1402; Chondroitin sulfate glucuronyltransferase; CSGlcA-T; Chondroitin glucuronyltransferase; Chondroitin polymerizing factor 2; ChPF-2; Chondroitin synthase 3; ChSy-3; N-acetylgalactosaminyl-proteoglycan 3-beta-glucuronosyltransferase

Target/Specificity

Recognizes endogenous levels of CSGLCAT protein.

Dilution

WB~~WB (1/500 - 1/1000), IH (1/50 - 1/100)

Format

Liquid in 0.42% Potassium phosphate, 0.87% Sodium chloride, pH 7.3, 30% glycerol, and 0.09% (W/V) sodium azide.

Storage

Store at -20 °C. Stable for 12 months from date of receipt

Anti-CSGLCAT Antibody - Protein Information

Name CHPF2

Synonyms CHSY3, CSGLCAT, KIAA1402

Function

Transfers glucuronic acid (GlcUA) from UDP-GlcUA to N- acetylgalactosamine residues on the non-reducing end of the elongating chondroitin polymer. Has no N-acetylgalactosaminyltransferase activity.

Cellular Location

Golgi apparatus, Golgi stack membrane; Single-pass type II membrane protein

Tissue Location

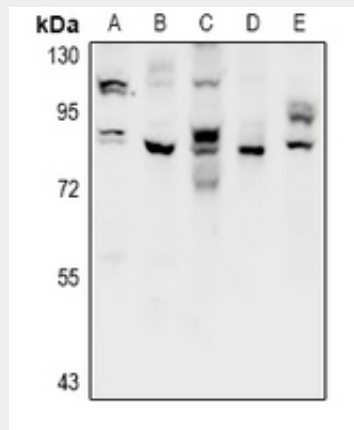
Ubiquitous. Highly expressed in placenta, small intestine and pancreas.

Anti-CSGLCAT Antibody - Protocols

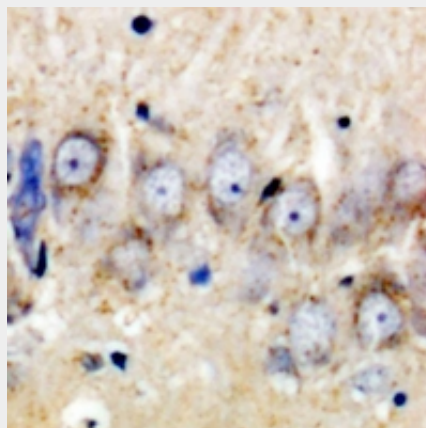
Provided below are standard protocols that you may find useful for product applications.

- [Western Blot](#)
- [Blocking Peptides](#)
- [Dot Blot](#)
- [Immunohistochemistry](#)
- [Immunofluorescence](#)
- [Immunoprecipitation](#)
- [Flow Cytometry](#)
- [Cell Culture](#)

Anti-CSGLCAT Antibody - Images



Western blot analysis of CSGLCAT expression in CT26 (A), PC12 (B), HCT116 (C), LOVO (D), HEK293T (E) whole cell lysates.



Immunohistochemical analysis of CSGLCAT staining in human brain formalin fixed paraffin embedded tissue section. The section was pre-treated using heat mediated antigen retrieval with sodium citrate buffer (pH 6.0). The section was then incubated with the antibody at room temperature and detected using an HRP conjugated compact polymer system. DAB was used as the chromogen. The section was then counterstained with haematoxylin and mounted with DPX.

Anti-CSGLCAT Antibody - Background

KLH-conjugated synthetic peptide encompassing a sequence within the N-term region of human CSGLCAT. The exact sequence is proprietary.