

**Anti-Caveolin 2 (pY19) Antibody**  
**Rabbit polyclonal antibody to Caveolin 2 (pY19)**  
**Catalog # AP60927**

**Specification**

---

**Anti-Caveolin 2 (pY19) Antibody - Product Information**

Application	WB
Primary Accession	<a href="#">P51636</a>
Other Accession	<a href="#">O9WVC3</a>
Reactivity	Human, Mouse, Rat
Host	Rabbit
Clonality	Polyclonal
Calculated MW	18291

**Anti-Caveolin 2 (pY19) Antibody - Additional Information**

**Gene ID** 858

**Other Names**  
Caveolin-2

**Target/Specificity**  
Recognizes endogenous levels of Caveolin 2 (pY19) protein.

**Dilution**  
WB~~WB (1/500 - 1/1000)

**Format**  
Liquid in 0.42% Potassium phosphate, 0.87% Sodium chloride, pH 7.3, 30% glycerol, and 0.09% (W/V) sodium azide.

**Storage**  
Store at -20 °C. Stable for 12 months from date of receipt

**Anti-Caveolin 2 (pY19) Antibody - Protein Information**

**Name** CAV2

**Function**  
May act as a scaffolding protein within caveolar membranes. Interacts directly with G-protein alpha subunits and can functionally regulate their activity. Acts as an accessory protein in conjunction with CAV1 in targeting to lipid rafts and driving caveolae formation. The Ser-36 phosphorylated form has a role in modulating mitosis in endothelial cells. Positive regulator of cellular mitogenesis of the MAPK signaling pathway. Required for the insulin-stimulated nuclear translocation and activation of MAPK1 and STAT3, and the subsequent regulation of cell cycle progression (By similarity).

**Cellular Location**

Nucleus. Cytoplasm. Golgi apparatus membrane; Peripheral membrane protein. Cell membrane; Peripheral membrane protein. Membrane, caveola; Peripheral membrane protein. Note=Potential hairpin-like structure in the membrane. Membrane protein of caveolae Tyr-19-phosphorylated form is enriched at sites of cell-cell contact and is translocated to the nucleus in complex with MAPK1 in response to insulin (By similarity). Tyr-27-phosphorylated form is located both in the cytoplasm and plasma membrane. CAV1-mediated Ser-23-phosphorylated form locates to the plasma membrane. Ser-36-phosphorylated form resides in intracellular compartments.

#### **Tissue Location**

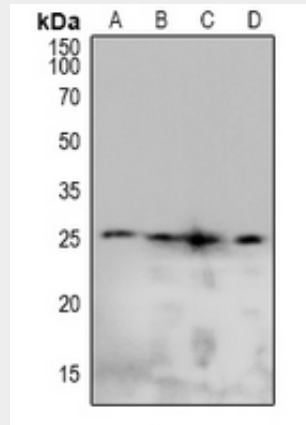
Expressed in endothelial cells, smooth muscle cells, skeletal myoblasts and fibroblasts

#### **Anti-Caveolin 2 (pY19) Antibody - Protocols**

Provided below are standard protocols that you may find useful for product applications.

- [Western Blot](#)
- [Blocking Peptides](#)
- [Dot Blot](#)
- [Immunohistochemistry](#)
- [Immunofluorescence](#)
- [Immunoprecipitation](#)
- [Flow Cytometry](#)
- [Cell Culture](#)

#### **Anti-Caveolin 2 (pY19) Antibody - Images**



Western blot analysis of Caveolin 2 (pY19) expression in Hela (A), Jurkat (B), NIH3T3 (C), H9C2 (D) whole cell lysates.

#### **Anti-Caveolin 2 (pY19) Antibody - Background**

KLH-conjugated synthetic peptide encompassing a sequence within the N-term region of human Caveolin 2. The exact sequence is proprietary.