

**Anti-OTUB1 (pS187) Antibody**  
Rabbit polyclonal antibody to OTUB1 (pS187)  
Catalog # AP60926

## Specification

---

### Anti-OTUB1 (pS187) Antibody - Product Information

Application	WB, E
Primary Accession	<a href="#">O96FW1</a>
Other Accession	<a href="#">O7TQI3</a>
Reactivity	Human, Mouse, Rat
Host	Rabbit
Clonality	Polyclonal
Calculated MW	31284

### Anti-OTUB1 (pS187) Antibody - Additional Information

Gene ID 55611

#### Other Names

OTB1; OTU1; Ubiquitin thioesterase OTUB1; Deubiquitinating enzyme OTUB1; OTU domain-containing ubiquitin aldehyde-binding protein 1; Otubain-1; hOTU1; Ubiquitin-specific-processing protease OTUB1

#### Target/Specificity

Recognizes endogenous levels of OTUB1 (pS187) protein.

#### Dilution

WB~~WB (1/500 - 1/1000)

E~~WB (1/500 - 1/1000)

#### Format

Liquid in 0.42% Potassium phosphate, 0.87% Sodium chloride, pH 7.3, 30% glycerol, and 0.09% (W/V) sodium azide.

#### Storage

Store at -20 °C. Stable for 12 months from date of receipt

### Anti-OTUB1 (pS187) Antibody - Protein Information

Name OTUB1

Synonyms OTB1, OTU1

#### Function

Hydrolase that can specifically remove 'Lys-48'-linked conjugated ubiquitin from proteins and plays an important regulatory role at the level of protein turnover by preventing degradation (PubMed: [12401499](http://www.uniprot.org/citations/12401499)), PubMed: [12704427](http://www.uniprot.org/citations/12704427)),

PubMed:<a href="http://www.uniprot.org/citations/14661020" target="\_blank">14661020</a>, PubMed:<a href="http://www.uniprot.org/citations/23827681" target="\_blank">23827681</a>). Regulator of T-cell anergy, a phenomenon that occurs when T-cells are rendered unresponsive to antigen rechallenge and no longer respond to their cognate antigen (PubMed:<a href="http://www.uniprot.org/citations/14661020" target="\_blank">14661020</a>). Acts via its interaction with RNF128/GRAIL, a crucial inductor of CD4 T-cell anergy (PubMed:<a href="http://www.uniprot.org/citations/14661020" target="\_blank">14661020</a>). Isoform 1 destabilizes RNF128, leading to prevent anergy (PubMed:<a href="http://www.uniprot.org/citations/14661020" target="\_blank">14661020</a>). In contrast, isoform 2 stabilizes RNF128 and promotes anergy (PubMed:<a href="http://www.uniprot.org/citations/14661020" target="\_blank">14661020</a>). Surprisingly, it regulates RNF128- mediated ubiquitination, but does not deubiquitinate polyubiquitinated RNF128 (PubMed:<a href="http://www.uniprot.org/citations/14661020" target="\_blank">14661020</a>). Deubiquitinates estrogen receptor alpha (ESR1) (PubMed:<a href="http://www.uniprot.org/citations/19383985" target="\_blank">19383985</a>). Mediates deubiquitination of 'Lys-48'-linked polyubiquitin chains, but not 'Lys-63'-linked polyubiquitin chains (PubMed:<a href="http://www.uniprot.org/citations/18954305" target="\_blank">18954305</a>, PubMed:<a href="http://www.uniprot.org/citations/19211026" target="\_blank">19211026</a>, PubMed:<a href="http://www.uniprot.org/citations/23827681" target="\_blank">23827681</a>). Not able to cleave di-ubiquitin (PubMed:<a href="http://www.uniprot.org/citations/18954305" target="\_blank">18954305</a>, PubMed:<a href="http://www.uniprot.org/citations/23827681" target="\_blank">23827681</a>). Also capable of removing NEDD8 from NEDD8 conjugates, but with a much lower preference compared to 'Lys-48'-linked ubiquitin (PubMed:<a href="http://www.uniprot.org/citations/18954305" target="\_blank">18954305</a>, PubMed:<a href="http://www.uniprot.org/citations/23827681" target="\_blank">23827681</a>).

#### Cellular Location

Cytoplasm {ECO:0000250|UniProtKB:B2RYG6}.

#### Tissue Location

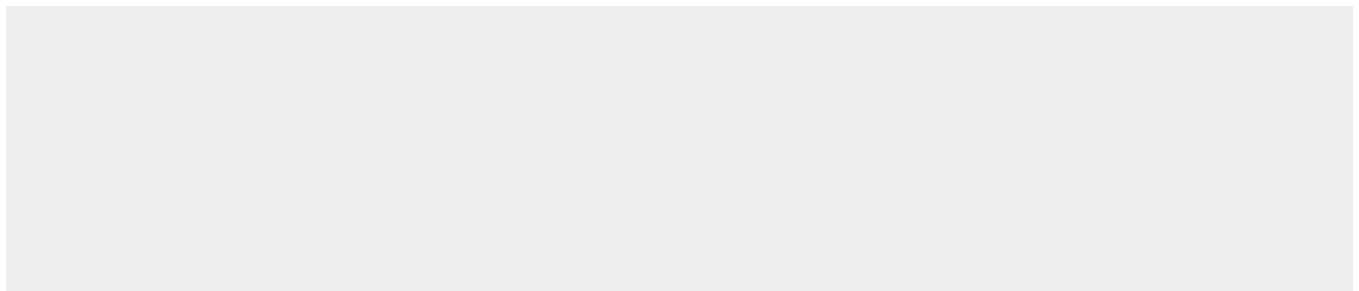
Isoform 1 is ubiquitous. Isoform 2 is expressed only in lymphoid tissues such as tonsils, lymph nodes and spleen, as well as peripheral blood mononuclear cells

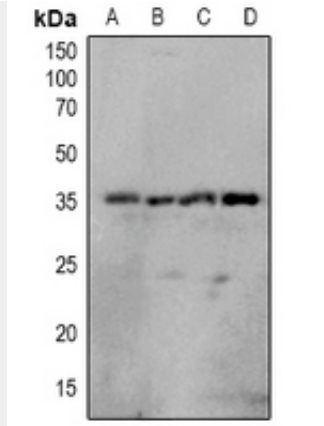
#### Anti-OTUB1 (pS187) Antibody - Protocols

Provided below are standard protocols that you may find useful for product applications.

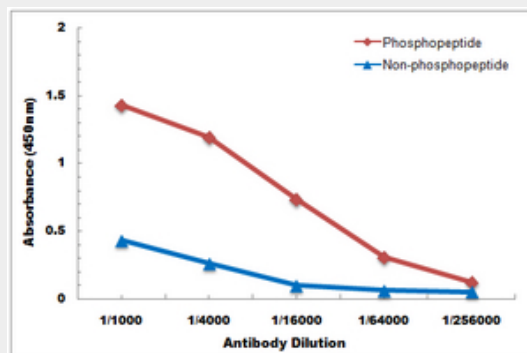
- [Western Blot](#)
- [Blocking Peptides](#)
- [Dot Blot](#)
- [Immunohistochemistry](#)
- [Immunofluorescence](#)
- [Immunoprecipitation](#)
- [Flow Cytometry](#)
- [Cell Culture](#)

#### Anti-OTUB1 (pS187) Antibody - Images





Western blot analysis of OTUB1 (pS187) expression in Hela (A), Jurkat (B), NIH3T3 (C), mouse brain (D) whole cell lysates.



Direct ELISA antibody dose-response curve using Anti-OTUB1 (pS187) Antibody. Antigen (phosphopeptide and non-phosphopeptide) concentration is 5 ug/ml. Goat Anti-Rabbit IgG (H&L) - HRP was used as the secondary antibody, and signal was developed by TMB substrate.

### Anti-OTUB1 (pS187) Antibody - Background

KLH-conjugated synthetic peptide encompassing a sequence within the center region of human OTUB1. The exact sequence is proprietary.