

**Anti-SMAD4 (pT276) Antibody**  
Rabbit polyclonal antibody to SMAD4 (pT276)  
Catalog # AP60925

**Specification**

---

**Anti-SMAD4 (pT276) Antibody - Product Information**

Application	WB, E
Primary Accession	<a href="#">O13485</a>
Other Accession	<a href="#">P97471</a>
Reactivity	Human, Mouse, Rat, Bovine
Host	Rabbit
Clonality	Polyclonal
Calculated MW	60439

**Anti-SMAD4 (pT276) Antibody - Additional Information**

**Gene ID** 4089

**Other Names**

DPC4; MADH4; Mothers against decapentaplegic homolog 4; MAD homolog 4; Mothers against DPP homolog 4; Deletion target in pancreatic carcinoma 4; SMAD family member 4; SMAD 4; Smad4; hSMAD4

**Target/Specificity**

Recognizes endogenous levels of SMAD4 (pT276) protein.

**Dilution**

WB~~WB (1/500 - 1/1000)

E~~WB (1/500 - 1/1000)

**Format**

Liquid in 0.42% Potassium phosphate, 0.87% Sodium chloride, pH 7.3, 30% glycerol, and 0.09% (W/V) sodium azide.

**Storage**

Store at -20 °C. Stable for 12 months from date of receipt

**Anti-SMAD4 (pT276) Antibody - Protein Information**

**Name** SMAD4

**Synonyms** DPC4, MADH4

**Function**

In muscle physiology, plays a central role in the balance between atrophy and hypertrophy. When recruited by MSTN, promotes atrophy response via phosphorylated SMAD2/4. MSTN decrease causes SMAD4 release and subsequent recruitment by the BMP pathway to promote hypertrophy via phosphorylated SMAD1/5/8. Acts synergistically with SMAD1 and YY1 in bone morphogenetic

protein (BMP)-mediated cardiac- specific gene expression. Binds to SMAD binding elements (SBEs) (5'- GTCT/AGAC-3') within BMP response element (BMPRE) of cardiac activating regions (By similarity). Common SMAD (co-SMAD) is the coactivator and mediator of signal transduction by TGF-beta (transforming growth factor). Component of the heterotrimeric SMAD2/SMAD3-SMAD4 complex that forms in the nucleus and is required for the TGF-mediated signaling (PubMed:<a href="http://www.uniprot.org/citations/25514493" target="\_blank">25514493</a>). Promotes binding of the SMAD2/SMAD4/FAST-1 complex to DNA and provides an activation function required for SMAD1 or SMAD2 to stimulate transcription. Component of the multimeric SMAD3/SMAD4/JUN/FOS complex which forms at the AP1 promoter site; required for synergistic transcriptional activity in response to TGF- beta. May act as a tumor suppressor. Positively regulates PDPK1 kinase activity by stimulating its dissociation from the 14-3-3 protein YWHAQ which acts as a negative regulator.

#### Cellular Location

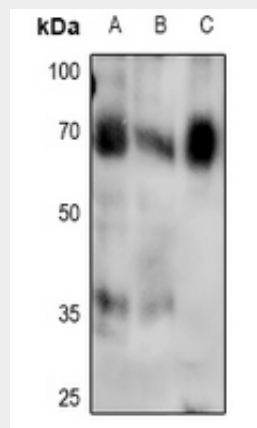
Cytoplasm. Nucleus Note=Cytoplasmic in the absence of ligand. Migrates to the nucleus when complexed with R-SMAD (PubMed:15799969). PDPK1 prevents its nuclear translocation in response to TGF-beta (PubMed:17327236)

#### Anti-SMAD4 (pT276) Antibody - Protocols

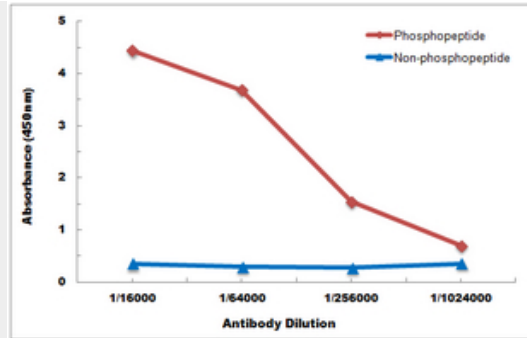
Provided below are standard protocols that you may find useful for product applications.

- [Western Blot](#)
- [Blocking Peptides](#)
- [Dot Blot](#)
- [Immunohistochemistry](#)
- [Immunofluorescence](#)
- [Immunoprecipitation](#)
- [Flow Cytometry](#)
- [Cell Culture](#)

#### Anti-SMAD4 (pT276) Antibody - Images



Western blot analysis of SMAD4 (pT276) expression in HeLa (A), HepG2 (B), mouse lung (C) whole cell lysates.



Direct ELISA antibody dose-response curve using Anti-SMAD4 (pT276) Antibody. Antigen (phosphopeptide and non-phosphopeptide) concentration is 5 ug/ml. Goat Anti-Rabbit IgG (H&L) - HRP was used as the secondary antibody, and signal was developed by TMB substrate.

### Anti-SMAD4 (pT276) Antibody - Background

KLH-conjugated synthetic peptide encompassing a sequence within the center region of human SMAD4. The exact sequence is proprietary.