

**Anti-VPS26B Antibody**  
Rabbit polyclonal antibody to VPS26B  
Catalog # AP60912**Specification**

---

**Anti-VPS26B Antibody - Product Information**

Application	<b>WB</b>
Primary Accession	<a href="#">O4G0F5</a>
Other Accession	<a href="#">O8C0E2</a>
Reactivity	<b>Human, Mouse, Rat, Zebrafish</b>
Host	<b>Rabbit</b>
Clonality	<b>Polyclonal</b>
Calculated MW	<b>39155</b>

**Anti-VPS26B Antibody - Additional Information****Gene ID** 112936**Other Names**

Vacuolar protein sorting-associated protein 26B; Vesicle protein sorting 26B

**Target/Specificity**

Recognizes endogenous levels of VPS26B protein.

**Dilution**

WB~~WB (1/500 - 1/1000)

**Format**

Liquid in 0.42% Potassium phosphate, 0.87% Sodium chloride, pH 7.3, 30% glycerol, and 0.09% (W/V) sodium azide.

**Storage**

Store at -20 °C. Stable for 12 months from date of receipt

**Anti-VPS26B Antibody - Protein Information****Name** VPS26B**Function**

Acts as a component of the retromer cargo-selective complex (CSC). The CSC is believed to be the core functional component of retromer or respective retromer complex variants acting to prevent missorting of selected transmembrane cargo proteins into the lysosomal degradation pathway. The recruitment of the CSC to the endosomal membrane involves RAB7A and SNX3. The SNX-BAR retromer mediates retrograde transport of cargo proteins from endosomes to the trans-Golgi network (TGN) and is involved in endosome-to-plasma membrane transport for cargo protein recycling. The SNX3-retromer mediates the retrograde transport of WLS distinct from the SNX-BAR retromer pathway. The SNX27-retromer is believed to be involved in endosome-to-plasma membrane trafficking and recycling of a broad spectrum of cargo proteins. The CSC seems to act

as recruitment hub for other proteins, such as the WASH complex and TBC1D5. May be involved in retrograde transport of SORT1 but not of IGF2R. Acts redundantly with VSP26A in SNX-27 mediated endocytic recycling of SLC2A1/GLUT1 (By similarity).

#### Cellular Location

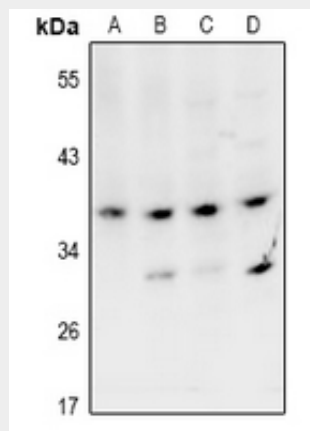
Cytoplasm {ECO:0000250|UniProtKB:Q8C0E2}. Membrane; Peripheral membrane protein {ECO:0000250|UniProtKB:Q8C0E2} Early endosome {ECO:0000250|UniProtKB:Q8C0E2}. Late endosome {ECO:0000250|UniProtKB:Q8C0E2}. Note=Localizes to early and late endosomal structures (By similarity). {ECO:0000250|UniProtKB:Q8C0E2}

#### Anti-VPS26B Antibody - Protocols

Provided below are standard protocols that you may find useful for product applications.

- [Western Blot](#)
- [Blocking Peptides](#)
- [Dot Blot](#)
- [Immunohistochemistry](#)
- [Immunofluorescence](#)
- [Immunoprecipitation](#)
- [Flow Cytometry](#)
- [Cell Culture](#)

#### Anti-VPS26B Antibody - Images



Western blot analysis of VPS26B expression in MCF7 (A), HeLa (B), PC12 (C), AML12 (D) whole cell lysates.

#### Anti-VPS26B Antibody - Background

KLH-conjugated synthetic peptide encompassing a sequence within the center region of human VPS26B. The exact sequence is proprietary.