

**Anti-Annexin A10 Antibody**  
Rabbit polyclonal antibody to Annexin A10  
Catalog # AP60892

## Specification

---

### Anti-Annexin A10 Antibody - Product Information

Application	WB
Primary Accession	<a href="#">O9UJ72</a>
Other Accession	<a href="#">O9OZ10</a>
Reactivity	Human, Mouse
Host	Rabbit
Clonality	Polyclonal
Calculated MW	37278

### Anti-Annexin A10 Antibody - Additional Information

**Gene ID** 11199

**Other Names**

ANX14; Annexin A10; Annexin-10; Annexin-14

**Target/Specificity**

Recognizes endogenous levels of Annexin A10 protein.

**Dilution**

WB~~WB (1/500 - 1/1000)

**Format**

Liquid in 0.42% Potassium phosphate, 0.87% Sodium chloride, pH 7.3, 30% glycerol, and 0.09% (W/V) sodium azide.

**Storage**

Store at -20 °C. Stable for 12 months from date of receipt

### Anti-Annexin A10 Antibody - Protein Information

**Name** ANXA10

**Synonyms** ANX14

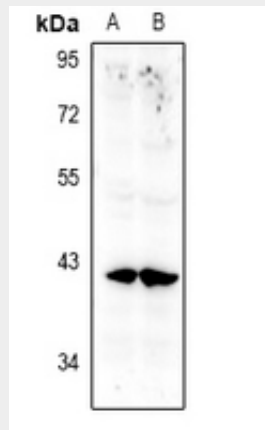
### Anti-Annexin A10 Antibody - Protocols

Provided below are standard protocols that you may find useful for product applications.

- [Western Blot](#)
- [Blocking Peptides](#)

- [Dot Blot](#)
- [Immunohistochemistry](#)
- [Immunofluorescence](#)
- [Immunoprecipitation](#)
- [Flow Cytometry](#)
- [Cell Culture](#)

#### Anti-Annexin A10 Antibody - Images



Western blot analysis of Annexin A10 expression in SGC7901 (A), LO2 (B) whole cell lysates.

#### Anti-Annexin A10 Antibody - Background

KLH-conjugated synthetic peptide encompassing a sequence within the C-term region of human Annexin A10. The exact sequence is proprietary.