

Anti-RPS15 Antibody
Rabbit polyclonal antibody to RPS15
Catalog # AP60882

Specification

Anti-RPS15 Antibody - Product Information

Application	WB
Primary Accession	P62841
Other Accession	P62843
Reactivity	Human, Mouse, Rat, Zebrafish, Pig, Chicken
Host	Rabbit
Clonality	Polyclonal
Calculated MW	17040

Anti-RPS15 Antibody - Additional Information

Gene ID 6209

Other Names

RIG; 40S ribosomal protein S15; RIG protein

Target/Specificity

Recognizes endogenous levels of RPS15 protein.

Dilution

WB~~WB (1/500 - 1/1000)

Format

Liquid in 0.42% Potassium phosphate, 0.87% Sodium chloride, pH 7.3, 30% glycerol, and 0.09% (W/V) sodium azide.

Storage

Store at -20 °C. Stable for 12 months from date of receipt

Anti-RPS15 Antibody - Protein Information

Name RPS15

Synonyms RIG

Function

Component of the small ribosomal subunit (PubMed: [23636399](http://www.uniprot.org/citations/23636399)). The ribosome is a large ribonucleoprotein complex responsible for the synthesis of proteins in the cell (PubMed: [23636399](http://www.uniprot.org/citations/23636399)).

Cellular Location

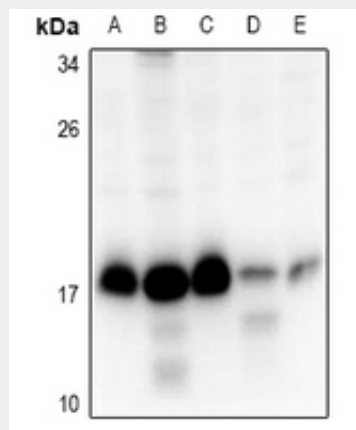
Cytoplasm.

Anti-RPS15 Antibody - Protocols

Provided below are standard protocols that you may find useful for product applications.

- [Western Blot](#)
- [Blocking Peptides](#)
- [Dot Blot](#)
- [Immunohistochemistry](#)
- [Immunofluorescence](#)
- [Immunoprecipitation](#)
- [Flow Cytometry](#)
- [Cell Culture](#)

Anti-RPS15 Antibody - Images



Western blot analysis of RPS15 expression in SKOV3 (A), HEK293T (B), A549 (C), AML12 (D), PC12 (E) whole cell lysates.

Anti-RPS15 Antibody - Background

KLH-conjugated synthetic peptide encompassing a sequence within the center region of human RPS15. The exact sequence is proprietary.