

Anti-P2X2 Antibody
Rabbit polyclonal antibody to P2X2
Catalog # AP60876

Specification

Anti-P2X2 Antibody - Product Information

Application	WB
Primary Accession	O9UBL9
Other Accession	O8K3P1
Reactivity	Human, Mouse
Host	Rabbit
Clonality	Polyclonal
Calculated MW	51754

Anti-P2X2 Antibody - Additional Information

Gene ID 22953

Other Names

P2X2; P2X purinoceptor 2; P2X2; ATP receptor; Purinergic receptor

Target/Specificity

Recognizes endogenous levels of P2X2 protein.

Dilution

WB~~WB (1/500 - 1/1000)

Format

Liquid in 0.42% Potassium phosphate, 0.87% Sodium chloride, pH 7.3, 30% glycerol, and 0.09% (W/V) sodium azide.

Storage

Store at -20 °C. Stable for 12 months from date of receipt

Anti-P2X2 Antibody - Protein Information

Name P2RX2 ([HGNC:15459](#))

Synonyms P2X2

Function

ATP-gated nonselective transmembrane cation channel permeable to potassium, sodium and calcium (PubMed: <http://www.uniprot.org/citations/10570044> target="_blank">10570044, PubMed: <http://www.uniprot.org/citations/31636190> target="_blank">31636190). Activation by extracellular ATP induces a variety of cellular responses, such as excitatory postsynaptic responses in sensory neurons, neuromuscular junctions (NMJ) formation, hearing, perception of taste and peristalsis (By similarity). In the inner ear, regulates sound transduction and auditory neurotransmission, outer hair cell electromotility, inner

ear gap junctions, and K(+) recycling (PubMed:23345450). Mediates synaptic transmission between neurons and from neurons to smooth muscle (By similarity).

Cellular Location

Cell membrane; Multi-pass membrane protein {ECO:0000250|UniProtKB:P56373}. Note=Localizes to the apical membranes of hair cells in the organ of Corti.

Tissue Location

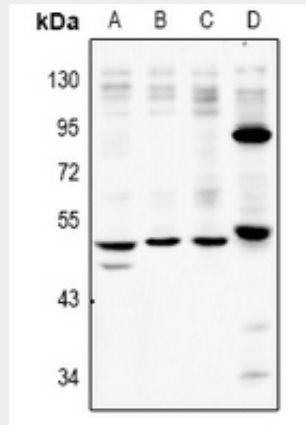
Expressed in both the central and peripheral nervous system, as well as in the pituitary gland

Anti-P2X2 Antibody - Protocols

Provided below are standard protocols that you may find useful for product applications.

- [Western Blot](#)
- [Blocking Peptides](#)
- [Dot Blot](#)
- [Immunohistochemistry](#)
- [Immunofluorescence](#)
- [Immunoprecipitation](#)
- [Flow Cytometry](#)
- [Cell Culture](#)

Anti-P2X2 Antibody - Images



Western blot analysis of P2X2 expression in A549 (A), SGC7901 (B), LO2 (C), AML12 (D) whole cell lysates.

Anti-P2X2 Antibody - Background

KLH-conjugated synthetic peptide encompassing a sequence within the C-term region of human P2X2. The exact sequence is proprietary.