

Anti-FR beta Antibody
Rabbit polyclonal antibody to FR beta
Catalog # AP60875**Specification**

Anti-FR beta Antibody - Product Information

Application	WB
Primary Accession	P14207
Other Accession	Q05685
Reactivity	Human, Mouse, Rat
Host	Rabbit
Clonality	Polyclonal
Calculated MW	29280

Anti-FR beta Antibody - Additional Information**Gene ID** 2350**Other Names**

Folate receptor beta; FR-beta; Folate receptor 2; Folate receptor fetal/placental; Placental folate-binding protein; FBP

Target/Specificity

Recognizes endogenous levels of FR beta protein.

Dilution

WB~~WB (1/500 - 1/1000)

Format

Liquid in 0.42% Potassium phosphate, 0.87% Sodium chloride, pH 7.3, 30% glycerol, and 0.09% (W/V) sodium azide.

Storage

Store at -20 °C. Stable for 12 months from date of receipt

Anti-FR beta Antibody - Protein Information**Name** FOLR2**Function**

Binds to folate and reduced folic acid derivatives and mediates delivery of 5-methyltetrahydrofolate and folate analogs into the interior of cells. Has high affinity for folate and folic acid analogs at neutral pH. Exposure to slightly acidic pH after receptor endocytosis triggers a conformation change that strongly reduces its affinity for folates and mediates their release.

Cellular Location

Cell membrane; Lipid-anchor, GPI-anchor. Secreted

Tissue Location

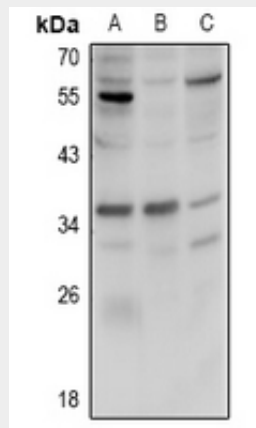
Expressed in placenta and hematopoietic cells. Expression is increased in malignant tissues

Anti-FR beta Antibody - Protocols

Provided below are standard protocols that you may find useful for product applications.

- [Western Blot](#)
- [Blocking Peptides](#)
- [Dot Blot](#)
- [Immunohistochemistry](#)
- [Immunofluorescence](#)
- [Immunoprecipitation](#)
- [Flow Cytometry](#)
- [Cell Culture](#)

Anti-FR beta Antibody - Images



Western blot analysis of FR beta expression in HCT116 (A), CT26 (B), PC12 (C) whole cell lysates.

Anti-FR beta Antibody - Background

KLH-conjugated synthetic peptide encompassing a sequence within the N-term region of human FR beta. The exact sequence is proprietary.