

Anti-BUB1B Antibody
Rabbit polyclonal antibody to BUB1B
Catalog # AP60871

Specification

Anti-BUB1B Antibody - Product Information

Application	WB
Primary Accession	O60566
Reactivity	Human
Host	Rabbit
Clonality	Polyclonal
Calculated MW	119545

Anti-BUB1B Antibody - Additional Information

Gene ID 701

Other Names

BUBR1; MAD3L; SSK1; Mitotic checkpoint serine/threonine-protein kinase BUB1 beta; MAD3/BUB1-related protein kinase; hBUBR1; Mitotic checkpoint kinase MAD3L; Protein SSK1

Target/Specificity

Recognizes endogenous levels of BUB1B protein.

Dilution

WB~~WB (1/500 - 1/1000)

Format

Liquid in 0.42% Potassium phosphate, 0.87% Sodium chloride, pH 7.3, 30% glycerol, and 0.09% (W/V) sodium azide.

Storage

Store at -20 °C. Stable for 12 months from date of receipt

Anti-BUB1B Antibody - Protein Information

Name BUB1B

Synonyms BUBR1, MAD3L, SSK1

Function

Essential component of the mitotic checkpoint. Required for normal mitosis progression. The mitotic checkpoint delays anaphase until all chromosomes are properly attached to the mitotic spindle. One of its checkpoint functions is to inhibit the activity of the anaphase-promoting complex/cyclosome (APC/C) by blocking the binding of CDC20 to APC/C, independently of its kinase activity. The other is to monitor kinetochore activities that depend on the kinetochore motor CENPE. Required for kinetochore localization of CENPE. Negatively regulates PLK1 activity in interphase cells and suppresses centrosome amplification. Also implicated in triggering apoptosis

in polyploid cells that exit aberrantly from mitotic arrest. May play a role for tumor suppression.

Cellular Location

Cytoplasm. Nucleus. Chromosome, centromere, kinetochore. Cytoplasm, cytoskeleton, microtubule organizing center, centrosome. Note=Cytoplasmic in interphase cells. Associates with the kinetochores in early prophase. Kinetochore localization requires BUB1, PLK1 and KNL1

Tissue Location

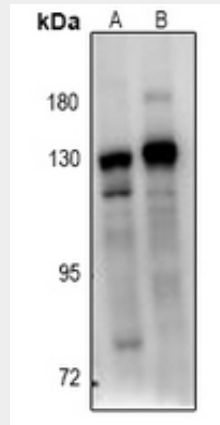
Highly expressed in thymus followed by spleen. Preferentially expressed in tissues with a high mitotic index

Anti-BUB1B Antibody - Protocols

Provided below are standard protocols that you may find useful for product applications.

- [Western Blot](#)
- [Blocking Peptides](#)
- [Dot Blot](#)
- [Immunohistochemistry](#)
- [Immunofluorescence](#)
- [Immunoprecipitation](#)
- [Flow Cytometry](#)
- [Cell Culture](#)

Anti-BUB1B Antibody - Images



Western blot analysis of BUB1B expression in HeLa (A), A549 (B) whole cell lysates.

Anti-BUB1B Antibody - Background

KLH-conjugated synthetic peptide encompassing a sequence within the center region of human BUB1B. The exact sequence is proprietary.