

**Anti-CD126 Antibody**  
Rabbit polyclonal antibody to CD126  
Catalog # AP60858

### Specification

---

#### Anti-CD126 Antibody - Product Information

Application	WB
Primary Accession	<a href="#">P08887</a>
Reactivity	Human, Mouse, Rat
Host	Rabbit
Clonality	Polyclonal
Calculated MW	51548

#### Anti-CD126 Antibody - Additional Information

Gene ID 3570

#### Other Names

Interleukin-6 receptor subunit alpha; IL-6 receptor subunit alpha; IL-6R subunit alpha; IL-6R-alpha; IL-6RA; IL-6R 1; Membrane glycoprotein 80; gp80; CD126

#### Target/Specificity

Recognizes endogenous levels of CD126 protein.

#### Dilution

WB~~WB (1/500 - 1/2000)

#### Format

Liquid in 0.42% Potassium phosphate, 0.87% Sodium chloride, pH 7.3, 30% glycerol, and 0.09% (W/V) sodium azide.

#### Storage

Store at -20 °C. Stable for 12 months from date of receipt

#### Anti-CD126 Antibody - Protein Information

Name IL6R ([HGNC:6019](#))

#### Function

Part of the receptor for interleukin 6. Binds to IL6 with low affinity, but does not transduce a signal (PubMed: [28265003](http://www.uniprot.org/citations/28265003)). Signal activation necessitate an association with IL6ST. Activation leads to the regulation of the immune response, acute-phase reactions and hematopoiesis (PubMed: [30995492](http://www.uniprot.org/citations/30995492), PubMed: [31235509](http://www.uniprot.org/citations/31235509)). The interaction with membrane-bound IL6R and IL6ST stimulates 'classic signaling', the restricted expression of the IL6R limits classic IL6 signaling to only a few tissues such as the liver and some cells of the immune system. Whereas the binding of IL6 and soluble IL6R to IL6ST stimulates

'trans- signaling'. Alternatively, 'cluster signaling' occurs when membrane- bound IL6:IL6R complexes on transmitter cells activate IL6ST receptors on neighboring receiver cells (Probable).

#### Cellular Location

[Isoform 1]: Cell membrane {ECO:0000250|UniProtKB:P22272}; Single-pass type I membrane protein [Soluble interleukin-6 receptor subunit alpha]: Secreted

#### Tissue Location

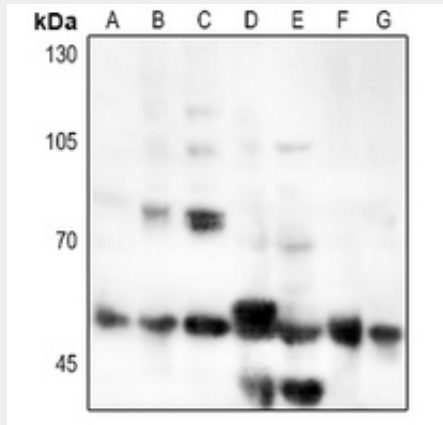
[Isoform 2]: Expressed in peripheral blood mononuclear cells and weakly found in urine and serum. 1%-20% of the total sIL6R in plasma is generated by alternative splicing (PubMed:28060820).

### Anti-CD126 Antibody - Protocols

Provided below are standard protocols that you may find useful for product applications.

- [Western Blot](#)
- [Blocking Peptides](#)
- [Dot Blot](#)
- [Immunohistochemistry](#)
- [Immunofluorescence](#)
- [Immunoprecipitation](#)
- [Flow Cytometry](#)
- [Cell Culture](#)

### Anti-CD126 Antibody - Images



Western blot analysis of CD126 expression in HEK293T (A), Hela (B), HGC27 (C), mouse liver (D), mouse lung (E), rat liver (F), rat lung (G) whole cell lysates.

### Anti-CD126 Antibody - Background

KLH-conjugated synthetic peptide encompassing a sequence within the center region of human CD126. The exact sequence is proprietary.