

**Anti-TCL-1A Antibody**  
Rabbit polyclonal antibody to TCL-1A  
Catalog # AP60856**Specification**

---

**Anti-TCL-1A Antibody - Product Information**

Application	<b>WB</b>
Primary Accession	<a href="#">P56279</a>
Other Accession	<a href="#">P56280</a>
Reactivity	<b>Human, Mouse, Rat</b>
Host	<b>Rabbit</b>
Clonality	<b>Polyclonal</b>
Calculated MW	<b>13460</b>

**Anti-TCL-1A Antibody - Additional Information****Gene ID** 8115**Other Names**

TCL1; T-cell leukemia/lymphoma protein 1A; Oncogene TCL-1; Oncogene TCL1; Protein p14 TCL1

**Target/Specificity**

KLH-conjugated synthetic peptide encompassing a sequence within the center region of human TCL-1A. The exact sequence is proprietary.

**Dilution**

WB~~WB (1/500 - 1/2000)

**Format**

Liquid in 0.42% Potassium phosphate, 0.87% Sodium chloride, pH 7.3, 30% glycerol, and 0.09% (W/V) sodium azide.

**Storage**

Store at -20 °C. Stable for 12 months from date of receipt

**Anti-TCL-1A Antibody - Protein Information****Name** TCL1A**Synonyms** TCL1**Function**

Enhances the phosphorylation and activation of AKT1, AKT2 and AKT3. Promotes nuclear translocation of AKT1. Enhances cell proliferation, stabilizes mitochondrial membrane potential and promotes cell survival.

**Cellular Location**

Cytoplasm. Nucleus. Microsome. Endoplasmic reticulum. Note=Microsomal fraction

### Tissue Location

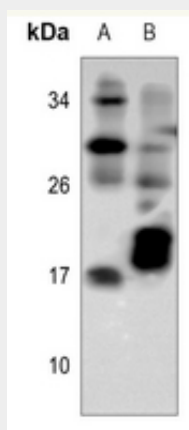
Restricted in the T-cell lineage to immature thymocytes and activated peripheral lymphocytes. Preferentially expressed early in T- and B-lymphocyte differentiation

### Anti-TCL-1A Antibody - Protocols

Provided below are standard protocols that you may find useful for product applications.

- [Western Blot](#)
- [Blocking Peptides](#)
- [Dot Blot](#)
- [Immunohistochemistry](#)
- [Immunofluorescence](#)
- [Immunoprecipitation](#)
- [Flow Cytometry](#)
- [Cell Culture](#)

### Anti-TCL-1A Antibody - Images



Western blot analysis of TCL-1A expression in rat spleen (A), mouse spleen (B) whole cell lysates.

### Anti-TCL-1A Antibody - Background

KLH-conjugated synthetic peptide encompassing a sequence within the center region of human TCL-1A. The exact sequence is proprietary.