

Anti-Latexin Antibody
Rabbit polyclonal antibody to Latexin
Catalog # AP60855

Specification

Anti-Latexin Antibody - Product Information

Application	WB
Primary Accession	O9BS40
Other Accession	P70202
Reactivity	Human, Mouse, Rat
Host	Rabbit
Clonality	Polyclonal
Calculated MW	25750

Anti-Latexin Antibody - Additional Information

Gene ID 56925

Other Names

Latexin; Endogenous carboxypeptidase inhibitor; ECI; Protein MUM; Tissue carboxypeptidase inhibitor; TCI

Target/Specificity

Recognizes endogenous levels of Latexin protein.

Dilution

WB~~WB (1/500 - 1/2000), IH (1/50 - 1/200)

Format

Liquid in 0.42% Potassium phosphate, 0.87% Sodium chloride, pH 7.3, 30% glycerol, and 0.09% (W/V) sodium azide.

Storage

Store at -20 °C. Stable for 12 months from date of receipt

Anti-Latexin Antibody - Protein Information

Name LXN

Function

Hardly reversible, non-competitive, and potent inhibitor of CPA1, CPA2 and CPA4. May play a role in inflammation.

Cellular Location

Cytoplasm.

Tissue Location

Highly expressed in heart, prostate, ovary, kidney, pancreas, and colon, moderate or low in other

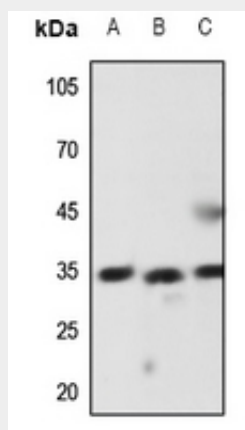
tissues including brain

Anti-Latexin Antibody - Protocols

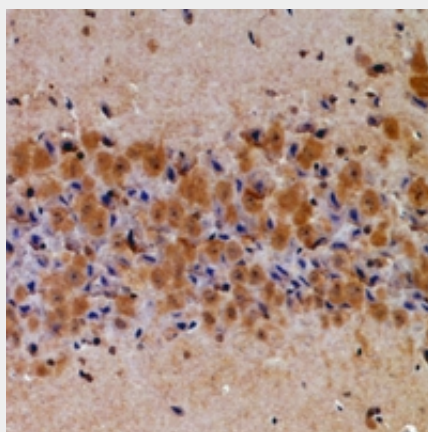
Provided below are standard protocols that you may find useful for product applications.

- [Western Blot](#)
- [Blocking Peptides](#)
- [Dot Blot](#)
- [Immunohistochemistry](#)
- [Immunofluorescence](#)
- [Immunoprecipitation](#)
- [Flow Cytometry](#)
- [Cell Culture](#)

Anti-Latexin Antibody - Images



Western blot analysis of Latexin expression in Hela (A), mouse liver (B), rat lung (C) whole cell lysates.



Immunohistochemical analysis of Latexin staining in rat brain formalin fixed paraffin embedded tissue section. The section was pre-treated using heat mediated antigen retrieval with sodium citrate buffer (pH 6.0). The section was then incubated with the antibody at room temperature and detected using an HRP conjugated compact polymer system. DAB was used as the chromogen. The section was then counterstained with haematoxylin and mounted with DPX.

Anti-Latexin Antibody - Background

KLH-conjugated synthetic peptide encompassing a sequence within the center region of human Latexin. The exact sequence is proprietary.