

**Anti-K Cadherin Antibody**  
**Rabbit polyclonal antibody to K Cadherin**  
**Catalog # AP60853****Specification**

---

**Anti-K Cadherin Antibody - Product Information**

|                   |                                    |
|-------------------|------------------------------------|
| Application       | WB                                 |
| Primary Accession | <a href="#">P55285</a>             |
| Other Accession   | <a href="#">P97326</a>             |
| Reactivity        | Human, Mouse, Rat, Chicken, Bovine |
| Host              | Rabbit                             |
| Clonality         | Polyclonal                         |
| Calculated MW     | 88309                              |

**Anti-K Cadherin Antibody - Additional Information****Gene ID** 1004**Other Names**

Cadherin-6; Kidney cadherin; K-cadherin

**Target/Specificity**

Recognizes endogenous levels of K Cadherin protein.

**Dilution**

WB~~WB (1/500 - 1/2000), IH (1/50 - 1/200)

**Format**

Liquid in 0.42% Potassium phosphate, 0.87% Sodium chloride, pH 7.3, 30% glycerol, and 0.09% (W/V) sodium azide.

**Storage**

Store at -20 °C. Stable for 12 months from date of receipt

**Anti-K Cadherin Antibody - Protein Information****Name** CDH6**Function**

Cadherins are calcium-dependent cell adhesion proteins. They preferentially interact with themselves in a homophilic manner in connecting cells; cadherins may thus contribute to the sorting of heterogeneous cell types.

**Cellular Location**

Cell membrane; Single-pass type I membrane protein

**Tissue Location**

Highly expressed in brain, cerebellum, and kidney. Lung, pancreas, and gastric mucosa show a

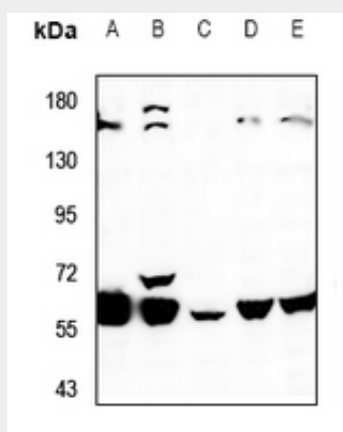
weak expression. Also expressed in certain liver and kidney carcinomas

### Anti-K Cadherin Antibody - Protocols

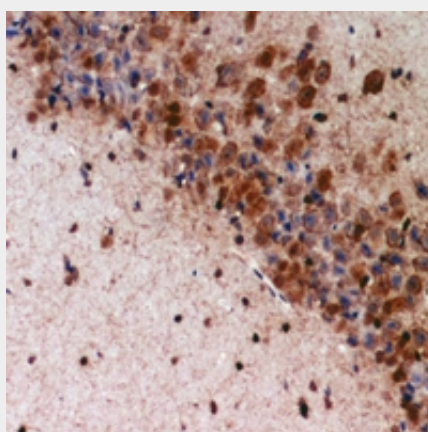
Provided below are standard protocols that you may find useful for product applications.

- [Western Blot](#)
- [Blocking Peptides](#)
- [Dot Blot](#)
- [Immunohistochemistry](#)
- [Immunofluorescence](#)
- [Immunoprecipitation](#)
- [Flow Cytometry](#)
- [Cell Culture](#)

### Anti-K Cadherin Antibody - Images



Western blot analysis of K Cadherin expression in HEK293T (A), C6 (B), MEF (C), HepG2 (D), H1792 (E) whole cell lysates.



Immunohistochemical analysis of K Cadherin staining in mouse brain formalin fixed paraffin embedded tissue section. The section was pre-treated using heat mediated antigen retrieval with sodium citrate buffer (pH 6.0). The section was then incubated with the antibody at room temperature and detected using an HRP conjugated compact polymer system. DAB was used as the chromogen. The section was then counterstained with haematoxylin and mounted with DPX.

### Anti-K Cadherin Antibody - Background

KLH-conjugated synthetic peptide encompassing a sequence within the center region of human K Cadherin. The exact sequence is proprietary.