

Anti-Carbonic Anhydrase 13 Antibody
Rabbit polyclonal antibody to Carbonic Anhydrase 13
Catalog # AP60848

Specification

Anti-Carbonic Anhydrase 13 Antibody - Product Information

Application	WB
Primary Accession	Q8N1Q1
Other Accession	Q9D6N1
Reactivity	Human, Mouse, Rat
Host	Rabbit
Clonality	Polyclonal
Calculated MW	29443

Anti-Carbonic Anhydrase 13 Antibody - Additional Information

Gene ID 377677

Other Names

Carbonic anhydrase 13; Carbonate dehydratase XIII; Carbonic anhydrase XIII; CA-XIII

Target/Specificity

Recognizes endogenous levels of Carbonic Anhydrase 13 protein.

Dilution

WB~~WB (1/500 - 1/2000)

Format

Liquid in 0.42% Potassium phosphate, 0.87% Sodium chloride, pH 7.3, 30% glycerol, and 0.09% (W/V) sodium azide.

Storage

Store at -20 °C. Stable for 12 months from date of receipt

Anti-Carbonic Anhydrase 13 Antibody - Protein Information

Name CA13

Function

Reversible hydration of carbon dioxide.

Tissue Location

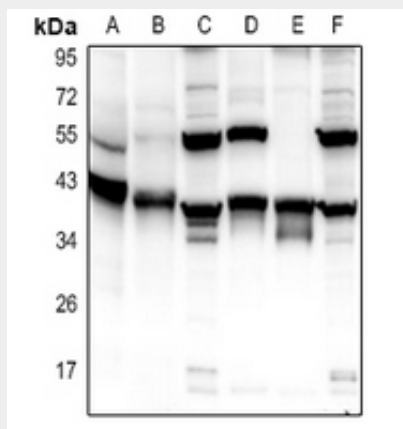
Expressed in thymus, small intestine, spleen, prostate, ovary, colon and testis.

Anti-Carbonic Anhydrase 13 Antibody - Protocols

Provided below are standard protocols that you may find useful for product applications.

- [Western Blot](#)
- [Blocking Peptides](#)
- [Dot Blot](#)
- [Immunohistochemistry](#)
- [Immunofluorescence](#)
- [Immunoprecipitation](#)
- [Flow Cytometry](#)
- [Cell Culture](#)

Anti-Carbonic Anhydrase 13 Antibody - Images



Western blot analysis of Carbonic Anhydrase 13 expression in mouse lung (A), rat liver (B), AML12 (C), C6 (D), U87MG (E), HeLa (F) whole cell lysates.

Anti-Carbonic Anhydrase 13 Antibody - Background

KLH-conjugated synthetic peptide encompassing a sequence within the center region of human Carbonic Anhydrase 13. The exact sequence is proprietary.