

Anti-SMAD2/3 (AcK19) Antibody
Rabbit polyclonal antibody to SMAD2/3 (AcK19)
Catalog # AP60834

Specification

Anti-SMAD2/3 (AcK19) Antibody - Product Information

Application	WB
Primary Accession	Q15796 , P84022
Other Accession	Q62432 , Q8BUN5
Reactivity	Human, Mouse, Rat, Zebrafish, Pig, Chicken, Bovine
Host	Rabbit
Clonality	Polyclonal

Anti-SMAD2/3 (AcK19) Antibody - Additional Information

Other Names

SMAD2; MADH2; MADR2; Mothers against decapentaplegic homolog 2; MAD homolog 2; Mothers against DPP homolog 2; JV18-1; Mad-related protein 2; hMAD-2; SMAD family member 2; SMAD 2; Smad2; hSMAD2; SMAD3; MADH3; Mothers against decapentaplegic homolog 3; MAD homolog 3; Mad3; Mothers against DPP homolog 3; hMAD-3; JV15-2; SMAD family member 3; SMAD 3; Smad3; hSMAD3

Target/Specificity

Recognizes endogenous levels of SMAD2/3 (AcK19) protein.

Dilution

WB~~WB (1/500 - 1/2000)

Format

Liquid in 0.42% Potassium phosphate, 0.87% Sodium chloride, pH 7.3, 30% glycerol, and 0.09% (W/V) sodium azide.

Storage

Store at -20 °C. Stable for 12 months from date of receipt

Anti-SMAD2/3 (AcK19) Antibody - Protein Information

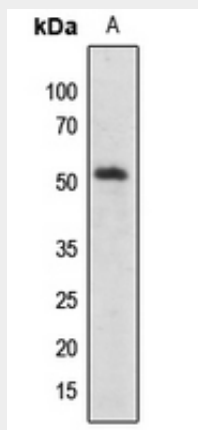
Anti-SMAD2/3 (AcK19) Antibody - Protocols

Provided below are standard protocols that you may find useful for product applications.

- [Western Blot](#)
- [Blocking Peptides](#)
- [Dot Blot](#)
- [Immunohistochemistry](#)

- [Immunofluorescence](#)
- [Immunoprecipitation](#)
- [Flow Cytometry](#)
- [Cell Culture](#)

Anti-SMAD2/3 (AcK19) Antibody - Images



Western blot analysis of SMAD2/3 (AcK19) expression in zebrafish (A) whole cell lysates.

Anti-SMAD2/3 (AcK19) Antibody - Background

KLH-conjugated synthetic peptide encompassing a sequence within the N-term region of human SMAD2/3. The exact sequence is proprietary.