

**Anti-VGLL2 Antibody**  
Rabbit polyclonal antibody to VGLL2  
Catalog # AP60823**Specification**

---

**Anti-VGLL2 Antibody - Product Information**

Application	WB
Primary Accession	<a href="#">Q8N8G2</a>
Other Accession	<a href="#">Q8BGW8</a>
Reactivity	Human, Mouse, Rat
Host	Rabbit
Clonality	Polyclonal
Calculated MW	33426

**Anti-VGLL2 Antibody - Additional Information****Gene ID** 245806**Other Names**

VITO1; Transcription cofactor vestigial-like protein 2; Vgl-2; Protein VITO1

**Target/Specificity**

Recognizes endogenous levels of VGLL2 protein.

**Dilution**

WB~~WB (1/500 - 1/2000)

**Format**

Liquid in 0.42% Potassium phosphate, 0.87% Sodium chloride, pH 7.3, 30% glycerol, and 0.09% (W/V) sodium azide.

**Storage**

Store at -20 °C. Stable for 12 months from date of receipt

**Anti-VGLL2 Antibody - Protein Information****Name** VGLL2**Synonyms** VITO1**Function**

May act as a specific coactivator for the mammalian TEFs. May play a role in the development of skeletal muscles.

**Cellular Location**

Nucleus.

**Tissue Location**

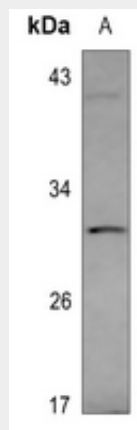
Skeletal muscle..

### Anti-VGLL2 Antibody - Protocols

Provided below are standard protocols that you may find useful for product applications.

- [Western Blot](#)
- [Blocking Peptides](#)
- [Dot Blot](#)
- [Immunohistochemistry](#)
- [Immunofluorescence](#)
- [Immunoprecipitation](#)
- [Flow Cytometry](#)
- [Cell Culture](#)

### Anti-VGLL2 Antibody - Images



Western blot analysis of VGLL2 expression in A549 (A) whole cell lysates.

### Anti-VGLL2 Antibody - Background

KLH-conjugated synthetic peptide encompassing a sequence within the center region of human VGLL2. The exact sequence is proprietary.