

**Anti-MYBPC3 Antibody**  
**Rabbit polyclonal antibody to MYBPC3**  
**Catalog # AP60822****Specification**

---

**Anti-MYBPC3 Antibody - Product Information**

Application	<b>WB</b>
Primary Accession	<a href="#">O14896</a>
Other Accession	<a href="#">O70468</a>
Reactivity	<b>Human, Mouse, Rat</b>
Host	<b>Rabbit</b>
Clonality	<b>Polyclonal</b>
Calculated MW	<b>140762</b>

**Anti-MYBPC3 Antibody - Additional Information****Gene ID** 4607**Other Names**

Myosin-binding protein C, cardiac-type; Cardiac MyBP-C; C-protein, cardiac muscle isoform

**Target/Specificity**

Recognizes endogenous levels of MYBPC3 protein.

**Dilution**

WB~~WB (1/500 - 1/2000), IH (1/50 - 1/200)

**Format**

Liquid in 0.42% Potassium phosphate, 0.87% Sodium chloride, pH 7.3, 30% glycerol, and 0.09% (W/V) sodium azide.

**Storage**

Store at -20 °C. Stable for 12 months from date of receipt

**Anti-MYBPC3 Antibody - Protein Information****Name** MYBPC3**Function**

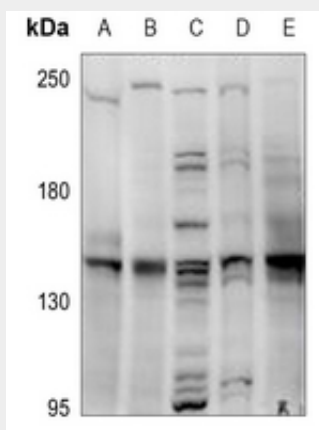
Thick filament-associated protein located in the crossbridge region of vertebrate striated muscle a bands. In vitro it binds MHC, F- actin and native thin filaments, and modifies the activity of actin-activated myosin ATPase. It may modulate muscle contraction or may play a more structural role.

**Anti-MYBPC3 Antibody - Protocols**

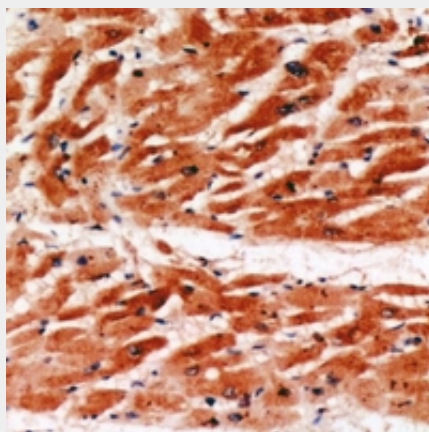
Provided below are standard protocols that you may find useful for product applications.

- [Western Blot](#)
- [Blocking Peptides](#)
- [Dot Blot](#)
- [Immunohistochemistry](#)
- [Immunofluorescence](#)
- [Immunoprecipitation](#)
- [Flow Cytometry](#)
- [Cell Culture](#)

#### Anti-MYBPC3 Antibody - Images



Western blot analysis of MYBPC3 expression in H9C2 (A), Raw264.7 (B), EC9706 (C), H1792 (D), K562 (E) whole cell lysates.



Immunohistochemical analysis of MYBPC3 staining in human heart formalin fixed paraffin embedded tissue section. The section was pre-treated using heat mediated antigen retrieval with sodium citrate buffer (pH 6.0). The section was then incubated with the antibody at room temperature and detected using an HRP conjugated compact polymer system. DAB was used as the chromogen. The section was then counterstained with haematoxylin and mounted with DPX.

#### Anti-MYBPC3 Antibody - Background

KLH-conjugated synthetic peptide encompassing a sequence within the center region of human MYBPC3. The exact sequence is proprietary.