

Anti-Alpha-1D Adrenergic Receptor Antibody
Rabbit polyclonal antibody to Alpha-1D Adrenergic Receptor
Catalog # AP60817

Specification

Anti-Alpha-1D Adrenergic Receptor Antibody - Product Information

Application	WB, IF
Primary Accession	P25100
Other Accession	P97714
Reactivity	Human, Mouse, Rat
Host	Rabbit
Clonality	Polyclonal
Calculated MW	60463

Anti-Alpha-1D Adrenergic Receptor Antibody - Additional Information

Gene ID 146

Other Names

ADRA1A; Alpha-1D adrenergic receptor; Alpha-1A adrenergic receptor; Alpha-1D adrenoreceptor; Alpha-1D adrenoceptor; Alpha-adrenergic receptor 1a

Target/Specificity

Recognizes endogenous levels of Alpha-1D Adrenergic Receptor protein.

Dilution

WB~~WB (1/500 - 1/2000), IH (1/50 - 1/200), IF/IC (1/50 - 1/100)
IF~~WB (1/500 - 1/2000), IH (1/50 - 1/200), IF/IC (1/50 - 1/100)

Format

Liquid in 0.42% Potassium phosphate, 0.87% Sodium chloride, pH 7.3, 30% glycerol, and 0.09% (W/V) sodium azide.

Storage

Store at -20 °C. Stable for 12 months from date of receipt

Anti-Alpha-1D Adrenergic Receptor Antibody - Protein Information

Name ADRA1D

Synonyms ADRA1A

Function

This alpha-adrenergic receptor mediates its effect through the influx of extracellular calcium.

Cellular Location

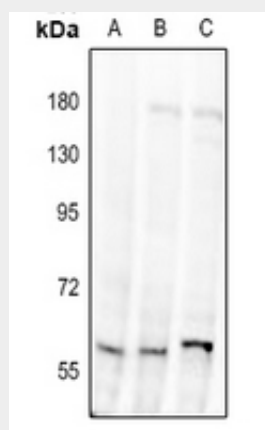
Cell membrane; Multi-pass membrane protein.

Anti-Alpha-1D Adrenergic Receptor Antibody - Protocols

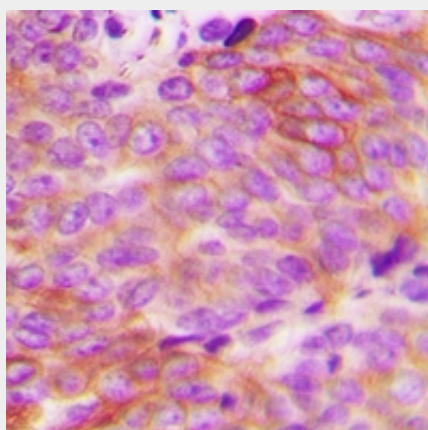
Provided below are standard protocols that you may find useful for product applications.

- [Western Blot](#)
- [Blocking Peptides](#)
- [Dot Blot](#)
- [Immunohistochemistry](#)
- [Immunofluorescence](#)
- [Immunoprecipitation](#)
- [Flow Cytometry](#)
- [Cell Culture](#)

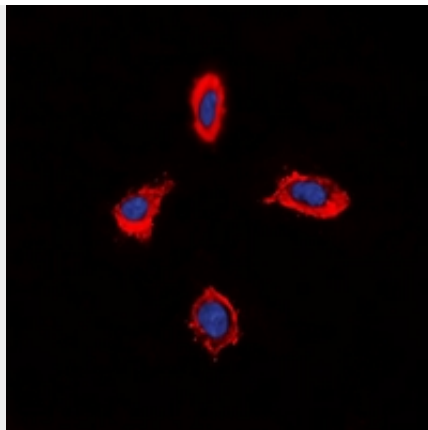
Anti-Alpha-1D Adrenergic Receptor Antibody - Images



Western blot analysis of Alpha-1D Adrenergic Receptor expression in H9C2 (A), Raw264.7 (B), U87MG (C) whole cell lysates.



Immunohistochemical analysis of Alpha-1D Adrenergic Receptor staining in human breast cancer formalin fixed paraffin embedded tissue section. The section was pre-treated using heat mediated antigen retrieval with sodium citrate buffer (pH 6.0). The section was then incubated with the antibody at room temperature and detected using an HRP conjugated compact polymer system. DAB was used as the chromogen. The section was then counterstained with haematoxylin and mounted with DPX.



Immunofluorescent analysis of Alpha-1D Adrenergic Receptor staining in MCF7 cells. Formalin-fixed cells were permeabilized with 0.1% Triton X-100 in TBS for 5-10 minutes and blocked with 3% BSA-PBS for 30 minutes at room temperature. Cells were probed with the primary antibody in 3% BSA-PBS and incubated overnight at 4 °C in a humidified chamber. Cells were washed with PBST and incubated with a DyLight 594-conjugated secondary antibody (red) in PBS at room temperature in the dark. DAPI was used to stain the cell nuclei (blue).

Anti-Alpha-1D Adrenergic Receptor Antibody - Background

KLH-conjugated synthetic peptide encompassing a sequence within the C-term region of human Alpha-1D Adrenergic Receptor. The exact sequence is proprietary.