

**Anti-Glutathione Peroxidase Antibody**  
Rabbit polyclonal antibody to Glutathione Peroxidase  
Catalog # AP60810**Specification**

---

**Anti-Glutathione Peroxidase Antibody - Product Information**

Application	WB
Primary Accession	<a href="#">P07203</a>
Other Accession	<a href="#">P11352</a>
Reactivity	Human, Mouse, Rat, Bovine
Host	Rabbit
Clonality	Polyclonal
Calculated MW	22088

**Anti-Glutathione Peroxidase Antibody - Additional Information****Gene ID** 2876**Other Names**

Glutathione peroxidase 1; GPx-1; GSHPx-1; Cellular glutathione peroxidase

**Target/Specificity**

Recognizes endogenous levels of Glutathione Peroxidase protein.

**Dilution**

WB~~WB (1/500 - 1/2000)

**Format**

Liquid in 0.42% Potassium phosphate, 0.87% Sodium chloride, pH 7.3, 30% glycerol, and 0.09% (W/V) sodium azide.

**Storage**

Store at -20 °C. Stable for 12 months from date of receipt

**Anti-Glutathione Peroxidase Antibody - Protein Information****Name** GPX1 ([HGNC:4553](#))**Function**

Catalyzes the reduction of hydroperoxides in a glutathione- dependent manner thus regulating cellular redox homeostasis (PubMed: [11115402](http://www.uniprot.org/citations/11115402), PubMed: [36608588](http://www.uniprot.org/citations/36608588)). Can reduce small soluble hydroperoxides such as H<sub>2</sub>O<sub>2</sub>, cumene hydroperoxide and tert-butyl hydroperoxide, as well as several fatty acid-derived hydroperoxides (PubMed: [11115402](http://www.uniprot.org/citations/11115402), PubMed: [36608588](http://www.uniprot.org/citations/36608588)). In platelets catalyzes the reduction of 12-hydroperoxyeicosatetraenoic acid, the primary product of the arachidonate 12-lipoxygenase

pathway (PubMed:<a href="http://www.uniprot.org/citations/11115402" target="\_blank">11115402</a>).

#### Cellular Location

Cytoplasm {ECO:0000250|UniProtKB:P11352}. Mitochondrion {ECO:0000250|UniProtKB:P11352}

#### Tissue Location

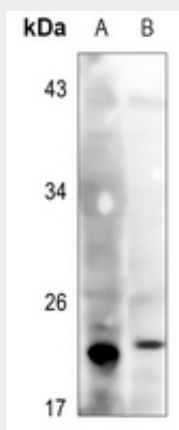
Expressed in platelets (at protein level).

### Anti-Glutathione Peroxidase Antibody - Protocols

Provided below are standard protocols that you may find useful for product applications.

- [Western Blot](#)
- [Blocking Peptides](#)
- [Dot Blot](#)
- [Immunohistochemistry](#)
- [Immunofluorescence](#)
- [Immunoprecipitation](#)
- [Flow Cytometry](#)
- [Cell Culture](#)

### Anti-Glutathione Peroxidase Antibody - Images



Western blot analysis of Glutathione Peroxidase expression in mouse liver (A), rat liver (B) whole cell lysates.

### Anti-Glutathione Peroxidase Antibody - Background

KLH-conjugated synthetic peptide encompassing a sequence within the center region of human Glutathione Peroxidase. The exact sequence is proprietary.