

Anti-Synapsin 1 (pS553) Antibody
Rabbit polyclonal antibody to Synapsin 1 (pS553)
Catalog # AP60807

Specification

Anti-Synapsin 1 (pS553) Antibody - Product Information

Application	WB
Primary Accession	P17600
Other Accession	O88935
Reactivity	Human, Mouse, Rat, Bovine, Dog
Host	Rabbit
Clonality	Polyclonal
Calculated MW	74111

Anti-Synapsin 1 (pS553) Antibody - Additional Information

Gene ID 6853

Other Names

Synapsin-1; Brain protein 4.1; Synapsin I

Target/Specificity

Recognizes endogenous levels of Synapsin 1 (pS553) protein.

Dilution

WB~~WB (1/500 - 1/1000)

Format

Liquid in 0.42% Potassium phosphate, 0.87% Sodium chloride, pH 7.3, 30% glycerol, and 0.09% (W/V) sodium azide.

Storage

Store at -20 °C. Stable for 12 months from date of receipt

Anti-Synapsin 1 (pS553) Antibody - Protein Information

Name SYN1

Function

Neuronal phosphoprotein that coats synaptic vesicles, and binds to the cytoskeleton. Acts as a regulator of synaptic vesicles trafficking, involved in the control of neurotransmitter release at the pre-synaptic terminal (PubMed: [21441247](http://www.uniprot.org/citations/21441247) target="_blank">21441247, PubMed: [23406870](http://www.uniprot.org/citations/23406870) target="_blank">23406870). Also involved in the regulation of axon outgrowth and synaptogenesis (By similarity). The complex formed with NOS1 and CAPON proteins is necessary for specific nitric-oxid functions at a presynaptic level (By similarity).

Cellular Location

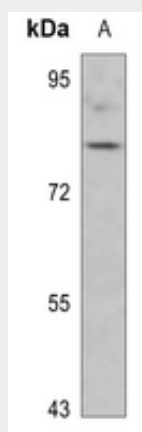
Synapse {ECO:0000250|UniProtKB:O88935}. Golgi apparatus {ECO:0000250|UniProtKB:O88935}. Presynapse. Cytoplasmic vesicle, secretory vesicle, synaptic vesicle {ECO:0000250|UniProtKB:P09951}. Note=Dissociates from synaptic vesicles and redistributes into the axon during action potential firing, in a step that precedes fusion of vesicles with the plasma membrane. Reclusters to presynapses after the cessation of synaptic activity. {ECO:0000250|UniProtKB:P09951}

Anti-Synapsin 1 (pS553) Antibody - Protocols

Provided below are standard protocols that you may find useful for product applications.

- [Western Blot](#)
- [Blocking Peptides](#)
- [Dot Blot](#)
- [Immunohistochemistry](#)
- [Immunofluorescence](#)
- [Immunoprecipitation](#)
- [Flow Cytometry](#)
- [Cell Culture](#)

Anti-Synapsin 1 (pS553) Antibody - Images



Western blot analysis of Synapsin 1 (pS553) expression in rat brain (A) whole cell lysates.

Anti-Synapsin 1 (pS553) Antibody - Background

KLH-conjugated synthetic peptide encompassing a sequence within the center region of human Synapsin 1. The exact sequence is proprietary.