

Anti-IGFBP1 Antibody
Rabbit polyclonal antibody to IGFBP1
Catalog # AP60790**Specification**

Anti-IGFBP1 Antibody - Product Information

Application	WB
Primary Accession	P08833
Reactivity	Human, Monkey
Host	Rabbit
Clonality	Polyclonal
Calculated MW	27904

Anti-IGFBP1 Antibody - Additional Information**Gene ID** 3484**Other Names**

IBP1; Insulin-like growth factor-binding protein 1; IBP-1; IGF-binding protein 1; IGFBP-1; Placental protein 12; PP12

Target/Specificity

Recognizes endogenous levels of IGFBP1 protein.

Dilution

WB~~WB (1/500 - 1/1000)

Format

Liquid in 0.42% Potassium phosphate, 0.87% Sodium chloride, pH 7.3, 30% glycerol, and 0.09% (W/V) sodium azide.

Storage

Store at -20 °C. Stable for 12 months from date of receipt

Anti-IGFBP1 Antibody - Protein Information**Name** IGFBP1**Synonyms** IBP1**Function**

IGF-binding proteins prolong the half-life of the IGFs and have been shown to either inhibit or stimulate the growth promoting effects of the IGFs on cell culture. They alter the interaction of IGFs with their cell surface receptors. Promotes cell migration.

Cellular Location

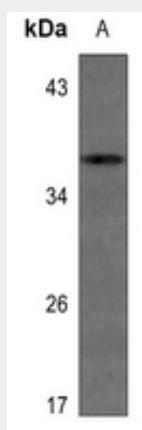
Secreted.

Anti-IGFBP1 Antibody - Protocols

Provided below are standard protocols that you may find useful for product applications.

- [Western Blot](#)
- [Blocking Peptides](#)
- [Dot Blot](#)
- [Immunohistochemistry](#)
- [Immunofluorescence](#)
- [Immunoprecipitation](#)
- [Flow Cytometry](#)
- [Cell Culture](#)

Anti-IGFBP1 Antibody - Images



Western blot analysis of IGFBP1 expression in U2OS (A) whole cell lysates.

Anti-IGFBP1 Antibody - Background

KLH-conjugated synthetic peptide encompassing a sequence within the center region of human IGFBP1. The exact sequence is proprietary.