

Anti-PPP4R2 Antibody
Rabbit polyclonal antibody to PPP4R2
Catalog # AP60779

Specification

Anti-PPP4R2 Antibody - Product Information

Application	WB
Primary Accession	O9NY27
Reactivity	Human, Mouse, Monkey
Host	Rabbit
Clonality	Polyclonal
Calculated MW	46898

Anti-PPP4R2 Antibody - Additional Information

Gene ID 151987

Other Names

Serine/threonine-protein phosphatase 4 regulatory subunit 2

Target/Specificity

Recognizes endogenous levels of PPP4R2 protein.

Dilution

WB~~WB (1/500 - 1/1000)

Format

Liquid in 0.42% Potassium phosphate, 0.87% Sodium chloride, pH 7.3, 30% glycerol, and 0.09% (W/V) sodium azide.

Storage

Store at -20 °C. Stable for 12 months from date of receipt

Anti-PPP4R2 Antibody - Protein Information

Name PPP4R2

Function

Regulatory subunit of serine/threonine-protein phosphatase 4 (PP4). May regulate the activity of PPP4C at centrosomal microtubule organizing centers. Its interaction with the SMN complex leads to enhance the temporal localization of snRNPs, suggesting a role of PPP4C in maturation of spliceosomal snRNPs. The PPP4C-PPP4R2-PPP4R3A PP4 complex specifically dephosphorylates H2AX phosphorylated on 'Ser-140' (gamma-H2AX) generated during DNA replication and required for DNA double strand break repair. Mediates RPA2 dephosphorylation by recruiting PPP4C to RPA2 in a DNA damage-dependent manner. RPA2 dephosphorylation is required for the efficient RPA2-mediated recruitment of RAD51 to chromatin following double strand breaks, an essential step for DNA repair.

Cellular Location

Cytoplasm, cytoskeleton, microtubule organizing center, centrosome. Nucleus. Note=Ionizing radiation induces relocalization to nuclear foci and colocalization with RPA2

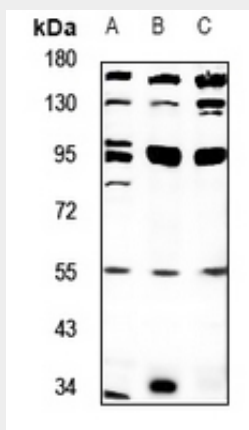
Tissue Location

Widely expressed..

Anti-PPP4R2 Antibody - Protocols

Provided below are standard protocols that you may find useful for product applications.

- [Western Blot](#)
- [Blocking Peptides](#)
- [Dot Blot](#)
- [Immunohistochemistry](#)
- [Immunofluorescence](#)
- [Immunoprecipitation](#)
- [Flow Cytometry](#)
- [Cell Culture](#)

Anti-PPP4R2 Antibody - Images

Western blot analysis of PPP4R2 expression in CT26 (A), P12 (B), HeLa (C) whole cell lysates.

Anti-PPP4R2 Antibody - Background

KLH-conjugated synthetic peptide encompassing a sequence within the center region of human PPP4R2. The exact sequence is proprietary.