

**Anti-Prosaposin Antibody**  
Rabbit polyclonal antibody to Prosaposin  
Catalog # AP60775

## Specification

---

### Anti-Prosaposin Antibody - Product Information

Application	WB
Primary Accession	<a href="#">P07602</a>
Other Accession	<a href="#">Q61207</a>
Reactivity	Human, Mouse, Rat
Host	Rabbit
Clonality	Polyclonal
Calculated MW	58113

### Anti-Prosaposin Antibody - Additional Information

Gene ID 5660

#### Other Names

GLBA; SAP1; Prosaposin; Proactivator polypeptide

#### Target/Specificity

Recognizes endogenous levels of Prosaposin protein.

#### Dilution

WB~~WB (1/500 - 1/1000), IH (1/100 - 1/200)

#### Format

Liquid in 0.42% Potassium phosphate, 0.87% Sodium chloride, pH 7.3, 30% glycerol, and 0.09% (W/V) sodium azide.

#### Storage

Store at -20 °C. Stable for 12 months from date of receipt

### Anti-Prosaposin Antibody - Protein Information

Name PSAP

Synonyms GLBA, SAP1

#### Function

Saposin-A and saposin-C stimulate the hydrolysis of glucosylceramide by beta-glucosylceramidase (EC 3.2.1.45) and galactosylceramide by beta-galactosylceramidase (EC 3.2.1.46). Saposin- C apparently acts by combining with the enzyme and acidic lipid to form an activated complex, rather than by solubilizing the substrate. Saposin-D is a specific sphingomyelin phosphodiesterase activator (EC 3.1.4.12). Saposins are specific low-molecular mass non-enzymic proteins, they participate in the lysosomal degradation of sphingolipids, which takes place by the sequential action of specific hydrolases.

## Cellular Location

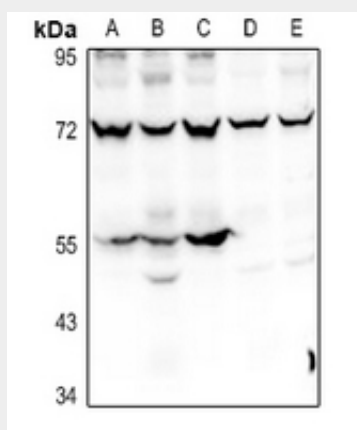
Lysosome

## Anti-Prosaposin Antibody - Protocols

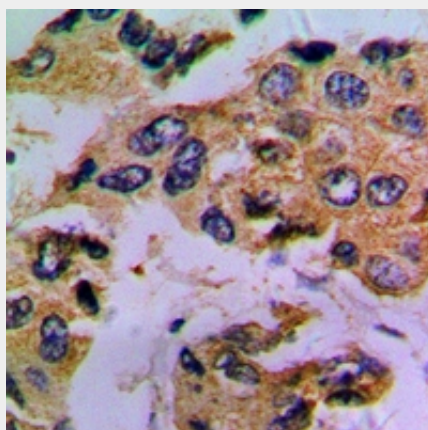
Provided below are standard protocols that you may find useful for product applications.

- [Western Blot](#)
- [Blocking Peptides](#)
- [Dot Blot](#)
- [Immunohistochemistry](#)
- [Immunofluorescence](#)
- [Immunoprecipitation](#)
- [Flow Cytometry](#)
- [Cell Culture](#)

## Anti-Prosaposin Antibody - Images



Western blot analysis of Prosaposin expression in A549 (A), HCT116 (B), LO2 (C), H9C2 (D), MEF (E) whole cell lysates.



Immunohistochemical analysis of Prosaposin staining in human prostate cancer formalin fixed paraffin embedded tissue section. The section was pre-treated using heat mediated antigen retrieval with sodium citrate buffer (pH 6.0). The section was then incubated with the antibody at room temperature and detected using an HRP conjugated compact polymer system. DAB was used as the chromogen. The section was then counterstained with haematoxylin and mounted

with DPX.

### **Anti-Prosaposin Antibody - Background**

KLH-conjugated synthetic peptide encompassing a sequence within the center region of human Prosaposin. The exact sequence is proprietary.