

**Anti-PLA1A Antibody**  
Rabbit polyclonal antibody to PLA1A  
Catalog # AP60774

### Specification

---

#### Anti-PLA1A Antibody - Product Information

Application	WB
Primary Accession	<a href="#">Q53H76</a>
Other Accession	<a href="#">Q8VI78</a>
Reactivity	Human, Mouse, Rat
Host	Rabbit
Clonality	Polyclonal
Calculated MW	49715

#### Anti-PLA1A Antibody - Additional Information

Gene ID 51365

#### Other Names

NMD; PSPLA1; Phospholipase A1 member A; Phosphatidylserine-specific phospholipase A1; PS-PLA1

#### Target/Specificity

Recognizes endogenous levels of PLA1A protein.

#### Dilution

WB~~WB (1/500 - 1/1000)

#### Format

Liquid in 0.42% Potassium phosphate, 0.87% Sodium chloride, pH 7.3, 30% glycerol, and 0.09% (W/V) sodium azide.

#### Storage

Store at -20 °C. Stable for 12 months from date of receipt

#### Anti-PLA1A Antibody - Protein Information

Name PLA1A ([HGNC:17661](#))

Synonyms NMD, PSPLA1

#### Function

Hydrolyzes the ester bond of the acyl group attached at the sn-1 position of phosphatidylserines (phospholipase A1 activity) and 1- acyl-2-lysophosphatidylserines (lysophospholipase activity) in the pathway of phosphatidylserines acyl chain remodeling (PubMed:<a href="http://www.uniprot.org/citations/10196188" target="\_blank">10196188</a>). Cleaves phosphatidylserines exposed on the outer leaflet of the plasma membrane of apoptotic cells producing 2-acyl-1-lysophosphatidylserines, which in turn enhance mast cell activation and

histamine production (By similarity). Has no activity toward other glycerophospholipids including phosphatidylcholines, phosphatidylethanolamines, phosphatidic acids or phosphatidylinositols, or glycerolipids such as triolein (By similarity).

#### Cellular Location

Secreted {ECO:0000250|UniProtKB:P97535}.

#### Tissue Location

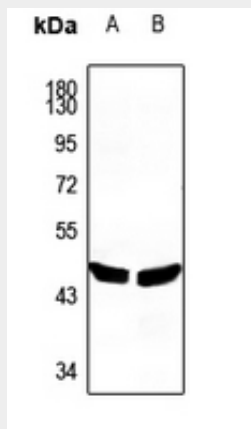
Widely expressed. Expressed in placenta, prostate and liver. Weakly or not expressed in skin, leukocytes, platelets, colon, spleen, lung, muscle and kidney.

### Anti-PLA1A Antibody - Protocols

Provided below are standard protocols that you may find useful for product applications.

- [Western Blot](#)
- [Blocking Peptides](#)
- [Dot Blot](#)
- [Immunohistochemistry](#)
- [Immunofluorescence](#)
- [Immunoprecipitation](#)
- [Flow Cytometry](#)
- [Cell Culture](#)

### Anti-PLA1A Antibody - Images



Western blot analysis of PLA1A expression in mouse liver (A), rat liver (B) whole cell lysates.

### Anti-PLA1A Antibody - Background

KLH-conjugated synthetic peptide encompassing a sequence within the C-term region of human PLA1A. The exact sequence is proprietary.