

**Anti-GGH Antibody**  
Rabbit polyclonal antibody to GGH  
Catalog # AP60765

## Specification

---

### Anti-GGH Antibody - Product Information

Application	<b>WB</b>
Primary Accession	<a href="#">O92820</a>
Other Accession	<a href="#">O9Z0L8</a>
Reactivity	<b>Human, Mouse, Rat</b>
Host	<b>Rabbit</b>
Clonality	<b>Polyclonal</b>
Calculated MW	<b>35964</b>

### Anti-GGH Antibody - Additional Information

**Gene ID** 8836

#### Other Names

Gamma-glutamyl hydrolase; Conjugase; GH; Gamma-Glu-X carboxypeptidase

#### Target/Specificity

Recognizes endogenous levels of GGH protein.

#### Dilution

WB~~WB (1/500 - 1/1000)

#### Format

Liquid in 0.42% Potassium phosphate, 0.87% Sodium chloride, pH 7.3, 30% glycerol, and 0.09% (W/V) sodium azide.

#### Storage

Store at -20 °C. Stable for 12 months from date of receipt

### Anti-GGH Antibody - Protein Information

**Name** GGH ([HGNC:4248](#))

#### Function

Hydrolyzes the polyglutamate sidechains of pteroylpolyglutamates. Progressively removes gamma-glutamyl residues from pteroylpoly-gamma-glutamate to yield pteroyl-alpha-glutamate (folic acid) and free glutamate (PubMed: [11005824](http://www.uniprot.org/citations/11005824), PubMed: [8816764](http://www.uniprot.org/citations/8816764)). May play an important role in the bioavailability of dietary pteroylpolyglutamates and in the metabolism of pteroylpolyglutamates and antifolates.

#### Cellular Location

Secreted, extracellular space. Lysosome. Melanosome. Note=While its intracellular location is

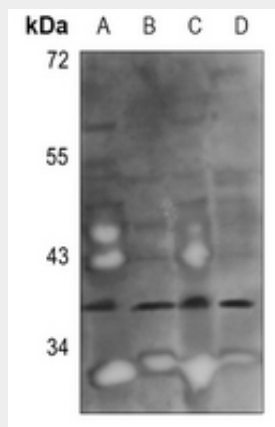
primarily the lysosome, most of the enzyme activity is secreted Identified by mass spectrometry in melanosome fractions from stage I to stage IV.

### Anti-GGH Antibody - Protocols

Provided below are standard protocols that you may find useful for product applications.

- [Western Blot](#)
- [Blocking Peptides](#)
- [Dot Blot](#)
- [Immunohistochemistry](#)
- [Immunofluorescence](#)
- [Immunoprecipitation](#)
- [Flow Cytometry](#)
- [Cell Culture](#)

### Anti-GGH Antibody - Images



Western blot analysis of GGH expression in mouse liver (A), mouse lung (B), rat liver (C), rat lung (D) whole cell lysates.

### Anti-GGH Antibody - Background

KLH-conjugated synthetic peptide encompassing a sequence within the C-term region of human GGH. The exact sequence is proprietary.