

Anti-Arylsulfatase I Antibody
Rabbit polyclonal antibody to Arylsulfatase I
Catalog # AP60751

Specification

Anti-Arylsulfatase I Antibody - Product Information

Application	WB
Primary Accession	Q5FYB1
Reactivity	Human, Monkey
Host	Rabbit
Clonality	Polyclonal
Calculated MW	64030

Anti-Arylsulfatase I Antibody - Additional Information

Gene ID 340075

Other Names

Arylsulfatase I; ASI

Target/Specificity

Recognizes endogenous levels of Arylsulfatase I protein.

Dilution

WB~~WB (1/500 - 1/1000)

Format

Liquid in 0.42% Potassium phosphate, 0.87% Sodium chloride, pH 7.3, 30% glycerol, and 0.09% (W/V) sodium azide.

Storage

Store at -20 °C. Stable for 12 months from date of receipt

Anti-Arylsulfatase I Antibody - Protein Information

Name ARSI

Function

Displays arylsulfatase activity at neutral pH, when co- expressed with SUMF1; arylsulfatase activity is measured in the secretion medium of retinal cell line, but no activity is recorded when measured in cell extracts (PubMed: <http://www.uniprot.org/citations/19262745> target="_blank">19262745). Lacks arylsulfatase activity (PubMed: <http://www.uniprot.org/citations/16500042> target="_blank">16500042).

Cellular Location

Secreted. Endoplasmic reticulum. Note=Localized in the intracellular granular structures

Tissue Location

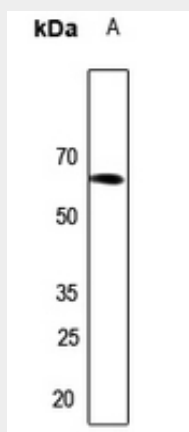
Expressed in placenta, in embryonic stem cells, fetal eyes and lens.

Anti-Arylsulfatase I Antibody - Protocols

Provided below are standard protocols that you may find useful for product applications.

- [Western Blot](#)
- [Blocking Peptides](#)
- [Dot Blot](#)
- [Immunohistochemistry](#)
- [Immunofluorescence](#)
- [Immunoprecipitation](#)
- [Flow Cytometry](#)
- [Cell Culture](#)

Anti-Arylsulfatase I Antibody - Images



Western blot analysis of Arylsulfatase I expression in HeLa (A) whole cell lysates.

Anti-Arylsulfatase I Antibody - Background

KLH-conjugated synthetic peptide encompassing a sequence within the center region of human Arylsulfatase I. The exact sequence is proprietary.