

Anti-APBB2 Antibody
Rabbit polyclonal antibody to APBB2
Catalog # AP60749

Specification

Anti-APBB2 Antibody - Product Information

Application	WB
Primary Accession	O92870
Other Accession	O9DBR4
Reactivity	Human, Mouse, Rat, Bovine
Host	Rabbit
Clonality	Polyclonal
Calculated MW	83374

Anti-APBB2 Antibody - Additional Information

Gene ID 323

Other Names

FE65L; FE65L1; Amyloid beta A4 precursor protein-binding family B member 2; Protein Fe65-like 1

Target/Specificity

Recognizes endogenous levels of APBB2 protein.

Dilution

WB~~WB (1/500 - 1/1000), IH (1/100 - 1/200)

Format

Liquid in 0.42% Potassium phosphate, 0.87% Sodium chloride, pH 7.3, 30% glycerol, and 0.09% (W/V) sodium azide.

Storage

Store at -20 °C. Stable for 12 months from date of receipt

Anti-APBB2 Antibody - Protein Information

Name APBB2 ([HGNC:582](#))

Function

Plays a role in the maintenance of lens transparency, and may also play a role in muscle cell strength (By similarity). Involved in hippocampal neurite branching and neuromuscular junction formation, as a result plays a role in spatial memory functioning (By similarity). Activates transcription of APP (PubMed: <http://www.uniprot.org/citations/14527950> target="_blank">14527950).

Cellular Location

Endoplasmic reticulum. Golgi apparatus. Early endosome

Tissue Location

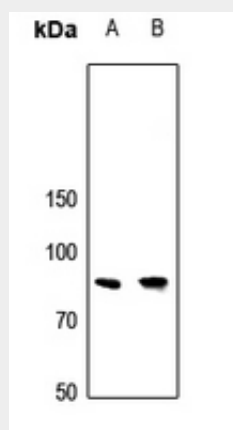
Widely expressed..

Anti-APBB2 Antibody - Protocols

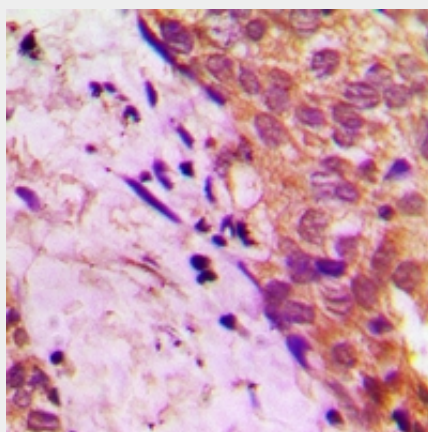
Provided below are standard protocols that you may find useful for product applications.

- [Western Blot](#)
- [Blocking Peptides](#)
- [Dot Blot](#)
- [Immunohistochemistry](#)
- [Immunofluorescence](#)
- [Immunoprecipitation](#)
- [Flow Cytometry](#)
- [Cell Culture](#)

Anti-APBB2 Antibody - Images



Western blot analysis of APBB2 expression in DLD (A), mouse brain (B) whole cell lysates.



Immunohistochemical analysis of APBB2 staining in human prostate cancer formalin fixed paraffin embedded tissue section. The section was pre-treated using heat mediated antigen retrieval with sodium citrate buffer (pH 6.0). The section was then incubated with the antibody at room temperature and detected using an HRP conjugated compact polymer system. DAB was used as the chromogen. The section was then counterstained with haematoxylin and mounted with DPX.

Anti-APBB2 Antibody - Background

KLH-conjugated synthetic peptide encompassing a sequence within the center region of human APBB2. The exact sequence is proprietary.