

**Anti-Laminin beta 2 Antibody**  
Rabbit polyclonal antibody to Laminin beta 2  
Catalog # AP60747

**Specification**

---

**Anti-Laminin beta 2 Antibody - Product Information**

Application	WB
Primary Accession	<a href="#">P55268</a>
Other Accession	<a href="#">Q61292</a>
Reactivity	Human, Mouse, Rat
Host	Rabbit
Clonality	Polyclonal
Calculated MW	195981

**Anti-Laminin beta 2 Antibody - Additional Information**

**Gene ID** 3913

**Other Names**

LAMS; Laminin subunit beta-2; Laminin B1s chain; Laminin-11 subunit beta; Laminin-14 subunit beta; Laminin-15 subunit beta; Laminin-3 subunit beta; Laminin-4 subunit beta; Laminin-7 subunit beta; Laminin-9 subunit beta; S-laminin subunit beta; S-LAM beta

**Target/Specificity**

Recognizes endogenous levels of Laminin beta 2 protein.

**Dilution**

WB~~WB (1/500 - 1/1000)

**Format**

Liquid in 0.42% Potassium phosphate, 0.87% Sodium chloride, pH 7.3, 30% glycerol, and 0.09% (W/V) sodium azide.

**Storage**

Store at -20 °C. Stable for 12 months from date of receipt

**Anti-Laminin beta 2 Antibody - Protein Information**

**Name** LAMB2

**Synonyms** LAMS

**Function**

Binding to cells via a high affinity receptor, laminin is thought to mediate the attachment, migration and organization of cells into tissues during embryonic development by interacting with other extracellular matrix components.

**Cellular Location**

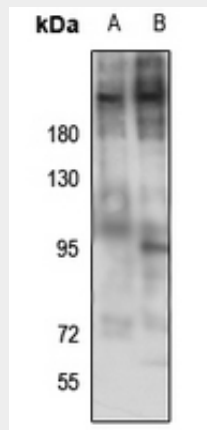
Secreted, extracellular space, extracellular matrix, basement membrane. Note=5-laminin is concentrated in the synaptic cleft of the neuromuscular junction

### Anti-Laminin beta 2 Antibody - Protocols

Provided below are standard protocols that you may find useful for product applications.

- [Western Blot](#)
- [Blocking Peptides](#)
- [Dot Blot](#)
- [Immunohistochemistry](#)
- [Immunofluorescence](#)
- [Immunoprecipitation](#)
- [Flow Cytometry](#)
- [Cell Culture](#)

### Anti-Laminin beta 2 Antibody - Images



Western blot analysis of Laminin beta 2 expression in mouse lung (A), mouse testis (B) whole cell lysates.

### Anti-Laminin beta 2 Antibody - Background

KLH-conjugated synthetic peptide encompassing a sequence within the N-term region of human Laminin beta 2. The exact sequence is proprietary.