

**Anti-DIDO1 Antibody**  
Rabbit polyclonal antibody to DIDO1  
Catalog # AP60746

## Specification

---

### Anti-DIDO1 Antibody - Product Information

Application	WB
Primary Accession	<a href="#">O9BTC0</a>
Reactivity	Human, Monkey
Host	Rabbit
Clonality	Polyclonal
Calculated MW	243873

### Anti-DIDO1 Antibody - Additional Information

**Gene ID** 11083

#### Other Names

C20orf158; DATF1; KIAA0333; Death-inducer obliterator 1; DIO-1; hDido1; Death-associated transcription factor 1; DATF-1

#### Target/Specificity

Recognizes endogenous levels of DIDO1 protein.

#### Dilution

WB~~WB (1/500 - 1/1000), IH (1/100 - 1/200)

#### Format

Liquid in 0.42% Potassium phosphate, 0.87% Sodium chloride, pH 7.3, 30% glycerol, and 0.09% (W/V) sodium azide.

#### Storage

Store at -20 °C. Stable for 12 months from date of receipt

### Anti-DIDO1 Antibody - Protein Information

**Name** DIDO1

**Synonyms** C20orf158, DATF1, KIAA0333

#### Function

Putative transcription factor, weakly pro-apoptotic when overexpressed (By similarity). Tumor suppressor. Required for early embryonic stem cell development.

#### Cellular Location

Cytoplasm. Nucleus {ECO:0000255|PROSITE-ProRule:PRU00651}. Cytoplasm, cytoskeleton, spindle. Note=Translocates to the nucleus after pro-apoptotic stimuli (By similarity). Translocates to the mitotic spindle upon loss of interaction with H3K4me3 during early mitosis.

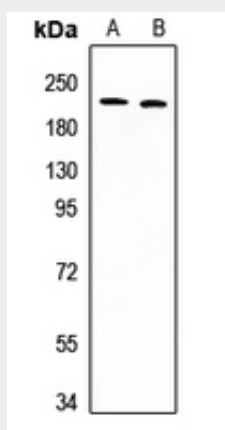
**Tissue Location**

Ubiquitous.

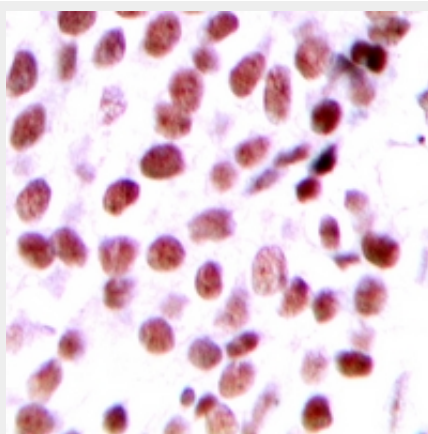
**Anti-DIDO1 Antibody - Protocols**

Provided below are standard protocols that you may find useful for product applications.

- [Western Blot](#)
- [Blocking Peptides](#)
- [Dot Blot](#)
- [Immunohistochemistry](#)
- [Immunofluorescence](#)
- [Immunoprecipitation](#)
- [Flow Cytometry](#)
- [Cell Culture](#)

**Anti-DIDO1 Antibody - Images**

Western blot analysis of DIDO1 expression in HeLa (A), A2780 (B) whole cell lysates.



Immunohistochemical analysis of DIDO1 staining in human breast cancer formalin fixed paraffin embedded tissue section. The section was pre-treated using heat mediated antigen retrieval with sodium citrate buffer (pH 6.0). The section was then incubated with the antibody at room temperature and detected using an HRP conjugated compact polymer system. DAB was used as the chromogen. The section was then counterstained with haematoxylin and mounted with DPX.

**Anti-DIDO1 Antibody - Background**

KLH-conjugated synthetic peptide encompassing a sequence within the N-term region of human DIDO1. The exact sequence is proprietary.