

**Anti-HSPB2 Antibody**  
Rabbit polyclonal antibody to HSPB2  
Catalog # AP60745

**Specification**

---

**Anti-HSPB2 Antibody - Product Information**

Application	WB, IF
Primary Accession	<a href="#">Q16082</a>
Other Accession	<a href="#">Q99PR8</a>
Reactivity	Human, Mouse, Rat, Bovine
Host	Rabbit
Clonality	Polyclonal
Calculated MW	20233

**Anti-HSPB2 Antibody - Additional Information**

**Gene ID** 3316

**Other Names**

Heat shock protein beta-2; HspB2; DMPK-binding protein; MKBP

**Target/Specificity**

Recognizes endogenous levels of HSPB2 protein.

**Dilution**

WB~~WB (1/500 - 1/1000), IH (1/100 - 1/200), IF/IC (1/100 - 1/500)

IF~~WB (1/500 - 1/1000), IH (1/100 - 1/200), IF/IC (1/100 - 1/500)

**Format**

Liquid in 0.42% Potassium phosphate, 0.87% Sodium chloride, pH 7.3, 30% glycerol, and 0.09% (W/V) sodium azide.

**Storage**

Store at -20 °C. Stable for 12 months from date of receipt

**Anti-HSPB2 Antibody - Protein Information**

**Name** HSPB2

**Function**

May regulate the kinase DMPK.

**Cellular Location**

Cytoplasm. Nucleus. Note=Localizes to nuclear foci

**Tissue Location**

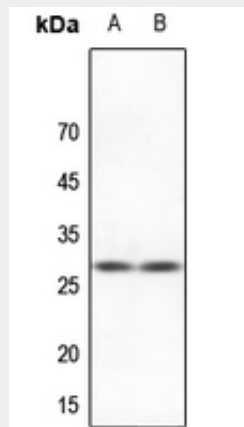
Expressed preferentially in skeletal muscle and heart but not in the lens

## Anti-HSPB2 Antibody - Protocols

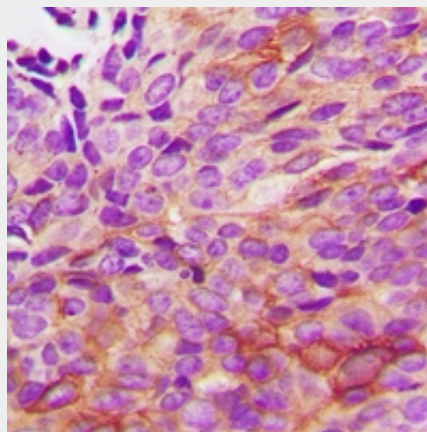
Provided below are standard protocols that you may find useful for product applications.

- [Western Blot](#)
- [Blocking Peptides](#)
- [Dot Blot](#)
- [Immunohistochemistry](#)
- [Immunofluorescence](#)
- [Immunoprecipitation](#)
- [Flow Cytometry](#)
- [Cell Culture](#)

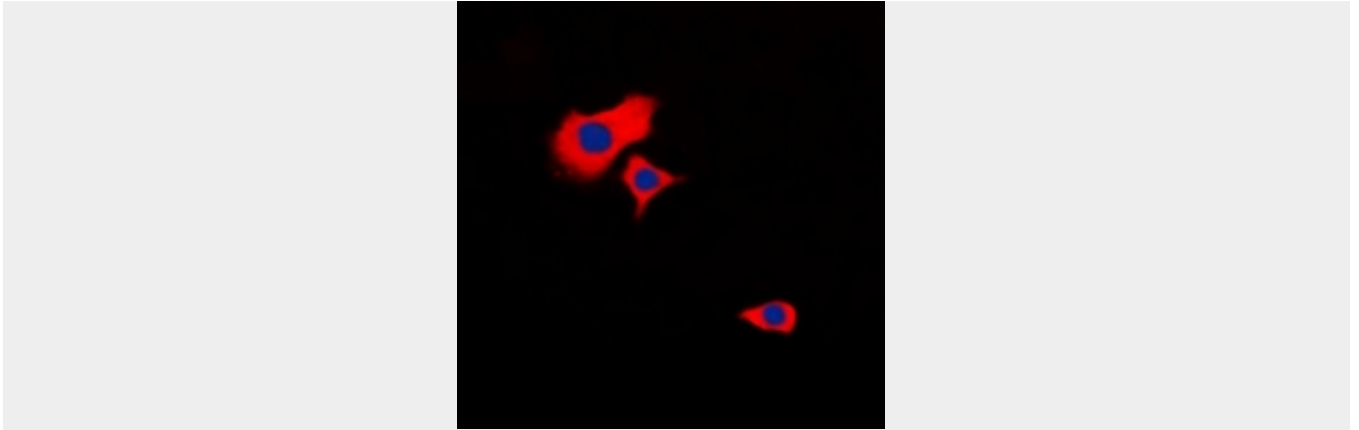
## Anti-HSPB2 Antibody - Images



Western blot analysis of HSPB2 expression in mouse muscle (A), rat muscle (B) whole cell lysates.



Immunohistochemical analysis of HSPB2 staining in human renal cancer formalin fixed paraffin embedded tissue section. The section was pre-treated using heat mediated antigen retrieval with sodium citrate buffer (pH 6.0). The section was then incubated with the antibody at room temperature and detected using an HRP conjugated compact polymer system. DAB was used as the chromogen. The section was then counterstained with haematoxylin and mounted with DPX.



Immunofluorescent analysis of HSPB2 staining in HeLa cells. Formalin-fixed cells were permeabilized with 0.1% Triton X-100 in TBS for 5-10 minutes and blocked with 3% BSA-PBS for 30 minutes at room temperature. Cells were probed with the primary antibody in 3% BSA-PBS and incubated overnight at 4 °C in a humidified chamber. Cells were washed with PBST and incubated with a DyLight 594-conjugated secondary antibody (red) in PBS at room temperature in the dark. DAPI was used to stain the cell nuclei (blue).

#### **Anti-HSPB2 Antibody - Background**

KLH-conjugated synthetic peptide encompassing a sequence within the C-term region of human HSPB2. The exact sequence is proprietary.