

**Anti-GSPT1 Antibody**  
Rabbit polyclonal antibody to GSPT1  
Catalog # AP60744

## Specification

---

### Anti-GSPT1 Antibody - Product Information

Application	WB
Primary Accession	<a href="#">P15170</a>
Other Accession	<a href="#">Q8R050</a>
Reactivity	Human, Mouse, Zebrafish
Host	Rabbit
Clonality	Polyclonal
Calculated MW	55756

### Anti-GSPT1 Antibody - Additional Information

Gene ID 2935

#### Other Names

ERF3A; Eukaryotic peptide chain release factor GTP-binding subunit ERF3A; Eukaryotic peptide chain release factor subunit 3a; eRF3a; G1 to S phase transition protein 1 homolog

#### Target/Specificity

Recognizes endogenous levels of GSPT1 protein.

#### Dilution

WB~~WB (1/500 - 1/1000), IH (1/100 - 1/200)

#### Format

Liquid in 0.42% Potassium phosphate, 0.87% Sodium chloride, pH 7.3, 30% glycerol, and 0.09% (W/V) sodium azide.

#### Storage

Store at -20 °C. Stable for 12 months from date of receipt

### Anti-GSPT1 Antibody - Protein Information

Name GSPT1

Synonyms ERF3A

#### Function

GTPase component of the eRF1-eRF3-GTP ternary complex, a ternary complex that mediates translation termination in response to the termination codons UAA, UAG and UGA (PubMed: <a href="http://www.uniprot.org/citations/15987998" target="\_blank">15987998</a>, PubMed: <a href="http://www.uniprot.org/citations/19417105" target="\_blank">19417105</a>, PubMed: <a href="http://www.uniprot.org/citations/2511002" target="\_blank">2511002</a>, PubMed: <a href="http://www.uniprot.org/citations/27863242" target="\_blank">27863242</a>).

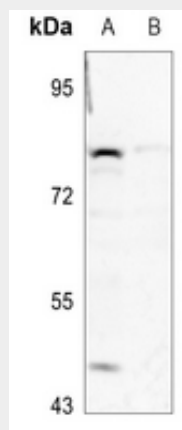
GSPT1/ERF3A mediates ETF1/ERF1 delivery to stop codons: The eRF1-eRF3-GTP complex binds to a stop codon in the ribosomal A-site (PubMed:<a href="http://www.uniprot.org/citations/27863242" target="\_blank">27863242</a>). GTP hydrolysis by GSPT1/ERF3A induces a conformational change that leads to its dissociation, permitting ETF1/ERF1 to accommodate fully in the A-site (PubMed:<a href="http://www.uniprot.org/citations/16777602" target="\_blank">16777602</a>, PubMed:<a href="http://www.uniprot.org/citations/27863242" target="\_blank">27863242</a>). Component of the transient SURF complex which recruits UPF1 to stalled ribosomes in the context of nonsense-mediated decay (NMD) of mRNAs containing premature stop codons (PubMed:<a href="http://www.uniprot.org/citations/24486019" target="\_blank">24486019</a>). Required for SHFL-mediated translation termination which inhibits programmed ribosomal frameshifting (-1PRF) of mRNA from viruses and cellular genes (PubMed:<a href="http://www.uniprot.org/citations/30682371" target="\_blank">30682371</a>).

### Anti-GSPT1 Antibody - Protocols

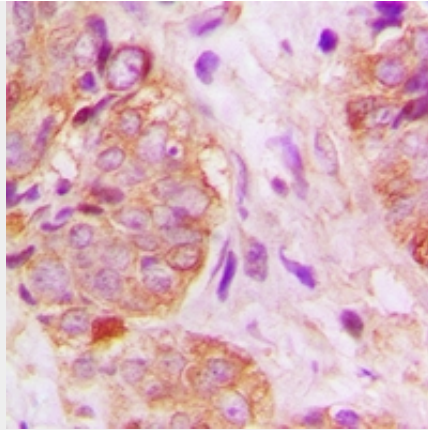
Provided below are standard protocols that you may find useful for product applications.

- [Western Blot](#)
- [Blocking Peptides](#)
- [Dot Blot](#)
- [Immunohistochemistry](#)
- [Immunofluorescence](#)
- [Immunoprecipitation](#)
- [Flow Cytometry](#)
- [Cell Culture](#)

### Anti-GSPT1 Antibody - Images



Western blot analysis of GSPT1 expression in H1792 (A), H446 (B) whole cell lysates.



Immunohistochemical analysis of GSPT1 staining in human breast cancer formalin fixed paraffin embedded tissue section. The section was pre-treated using heat mediated antigen retrieval with sodium citrate buffer (pH 6.0). The section was then incubated with the antibody at room temperature and detected using an HRP conjugated compact polymer system. DAB was used as the chromogen. The section was then counterstained with haematoxylin and mounted with DPX.

#### **Anti-GSPT1 Antibody - Background**

KLH-conjugated synthetic peptide encompassing a sequence within the center region of human GSPT1. The exact sequence is proprietary.