

Anti-5-HT2C Antibody
Rabbit polyclonal antibody to 5-HT2C
Catalog # AP60738

Specification

Anti-5-HT2C Antibody - Product Information

Application	WB
Primary Accession	P28335
Other Accession	P34968
Reactivity	Human, Mouse, Dog
Host	Rabbit
Clonality	Polyclonal
Calculated MW	51805

Anti-5-HT2C Antibody - Additional Information

Gene ID 3358

Other Names

HTR1C; 5-hydroxytryptamine receptor 2C; 5-HT-2C; 5-HT2C; 5-HTR2C; 5-hydroxytryptamine receptor 1C; 5-HT-1C; 5-HT1C; Serotonin receptor 2C

Target/Specificity

Recognizes endogenous levels of 5-HT2C protein.

Dilution

WB~~WB (1/500 - 1/1000)

Format

Liquid in 0.42% Potassium phosphate, 0.87% Sodium chloride, pH 7.3, 30% glycerol, and 0.09% (W/V) sodium azide.

Storage

Store at -20 °C. Stable for 12 months from date of receipt

Anti-5-HT2C Antibody - Protein Information

Name HTR2C ([HGNC:5295](#))

Synonyms HTR1C

Function

G-protein coupled receptor for 5-hydroxytryptamine (serotonin) (PubMed: 12970106, PubMed: 18703043, PubMed: 19057895, PubMed: 29398112, PubMed: 7895773). Also functions

as a receptor for various drugs and psychoactive substances, including ergot alkaloid derivatives, 1-2,5,-dimethoxy-4-iodophenyl-2-aminopropane (DOI) and lysergic acid diethylamide (LSD) (PubMed:19057895, PubMed:29398112). Ligand binding causes a conformation change that triggers signaling via guanine nucleotide-binding proteins (G proteins) and modulates the activity of downstream effectors (PubMed:18703043, PubMed:29398112). HTR2C is coupled to G(q)/G(11) G alpha proteins and activates phospholipase C-beta, releasing diacylglycerol (DAG) and inositol 1,4,5-trisphosphate (IP3) second messengers that modulate the activity of phosphatidylinositol 3-kinase and promote the release of Ca(2+) ions from intracellular stores, respectively (PubMed:18703043, PubMed:29398112). Beta-arrestin family members inhibit signaling via G proteins and mediate activation of alternative signaling pathways (PubMed:29398112). Regulates neuronal activity via the activation of short transient receptor potential calcium channels in the brain, and thereby modulates the activation of pro-opiomelanocortin neurons and the release of CRH that then regulates the release of corticosterone (By similarity). Plays a role in the regulation of appetite and eating behavior, responses to anxiogenic stimuli and stress (By similarity). Plays a role in insulin sensitivity and glucose homeostasis (By similarity).

Cellular Location

Cell membrane; Multi-pass membrane protein

Tissue Location

Detected in brain..

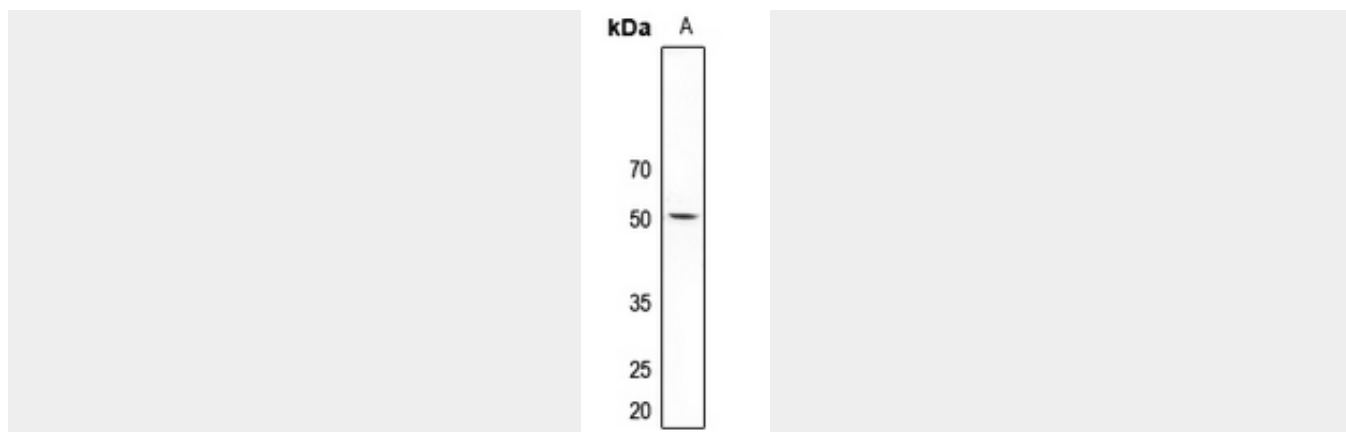
Anti-5-HT2C Antibody - Protocols

Provided below are standard protocols that you may find useful for product applications.

- [Western Blot](#)
- [Blocking Peptides](#)
- [Dot Blot](#)
- [Immunohistochemistry](#)
- [Immunofluorescence](#)
- [Immunoprecipitation](#)
- [Flow Cytometry](#)
- [Cell Culture](#)

Anti-5-HT2C Antibody - Images





Western blot analysis of 5-HT2C expression in mouse kidney (A) whole cell lysates.

Anti-5-HT2C Antibody - Background

KLH-conjugated synthetic peptide encompassing a sequence within the center region of human 5-HT2C. The exact sequence is proprietary.