

Anti-TCFL5 Antibody
Rabbit polyclonal antibody to TCFL5
Catalog # AP60733

Specification

Anti-TCFL5 Antibody - Product Information

Application	WB
Primary Accession	O9UL49
Reactivity	Human, Mouse, Monkey
Host	Rabbit
Clonality	Polyclonal
Calculated MW	52697

Anti-TCFL5 Antibody - Additional Information

Gene ID 10732

Other Names

CHA; E2BP1; Transcription factor-like 5 protein; Cha transcription factor; HPV-16 E2-binding protein 1; E2BP-1

Target/Specificity

Recognizes endogenous levels of TCFL5 protein.

Dilution

WB~~WB (1/500 - 1/1000), IH (1/100 - 1/200)

Format

Liquid in 0.42% Potassium phosphate, 0.87% Sodium chloride, pH 7.3, 30% glycerol, and 0.09% (W/V) sodium azide.

Storage

Store at -20 °C. Stable for 12 months from date of receipt

Anti-TCFL5 Antibody - Protein Information

Name TCFL5

Synonyms CHA, E2BP1

Function

Putative transcription factor. Isoform 3 may play a role in early spermatogenesis.

Cellular Location

Nucleus {ECO:0000255|PROSITE-ProRule:PRU00981, ECO:0000269|PubMed:9763657}

Tissue Location

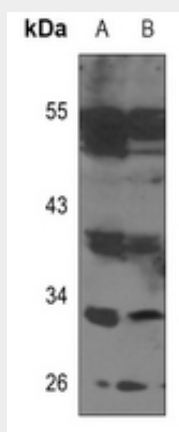
Isoform 3 is testis specific. Isoform 2 is pancreas specific.

Anti-TCFL5 Antibody - Protocols

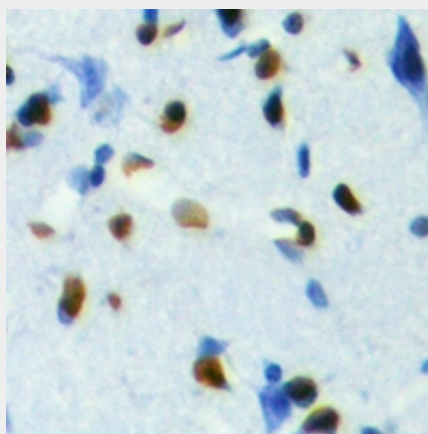
Provided below are standard protocols that you may find useful for product applications.

- [Western Blot](#)
- [Blocking Peptides](#)
- [Dot Blot](#)
- [Immunohistochemistry](#)
- [Immunofluorescence](#)
- [Immunoprecipitation](#)
- [Flow Cytometry](#)
- [Cell Culture](#)

Anti-TCFL5 Antibody - Images



Western blot analysis of TCFL5 expression in HEK293T (A), MCF7 (B) whole cell lysates.



Immunohistochemical analysis of TCFL5 staining in human brain formalin fixed paraffin embedded tissue section. The section was pre-treated using heat mediated antigen retrieval with sodium citrate buffer (pH 6.0). The section was then incubated with the antibody at room temperature and detected using an HRP conjugated compact polymer system. DAB was used as the chromogen. The section was then counterstained with haematoxylin and mounted with DPX.

Anti-TCFL5 Antibody - Background

KLH-conjugated synthetic peptide encompassing a sequence within the C-term region of human TCFL5. The exact sequence is proprietary.