

Anti-ZC3H7B Antibody
Rabbit polyclonal antibody to ZC3H7B
Catalog # AP60731

Specification

Anti-ZC3H7B Antibody - Product Information

Application	WB
Primary Accession	O9UGR2
Reactivity	Human, Mouse, Rat
Host	Rabbit
Clonality	Polyclonal
Calculated MW	109858

Anti-ZC3H7B Antibody - Additional Information

Gene ID 23264

Other Names

KIAA1031; Zinc finger CCCH domain-containing protein 7B; Rotavirus 'X'-associated non-structural protein; RoXaN

Target/Specificity

Recognizes endogenous levels of ZC3H7B protein.

Dilution

WB~~WB (1/500 - 1/1000), IH (1/100 - 1/200)

Format

Liquid in 0.42% Potassium phosphate, 0.87% Sodium chloride, pH 7.3, 30% glycerol, and 0.09% (W/V) sodium azide.

Storage

Store at -20 °C. Stable for 12 months from date of receipt

Anti-ZC3H7B Antibody - Protein Information

Name ZC3H7B

Synonyms KIAA1031

Function

May be a specific regulator of miRNA biogenesis. Binds to microRNAs MIR7-1, MIR16-2 and MIR29A hairpins recognizing the 'ATA(A/T)' motif in the apical loop.

Cellular Location

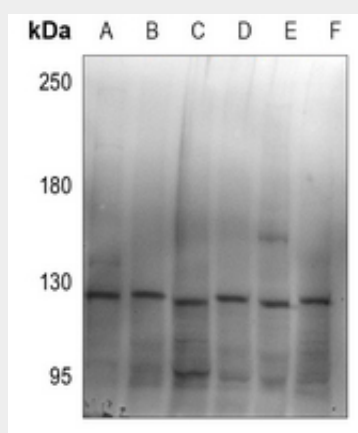
Nucleus. Note=Nuclear localization seems to be depleted upon rotavirus A infection

Anti-ZC3H7B Antibody - Protocols

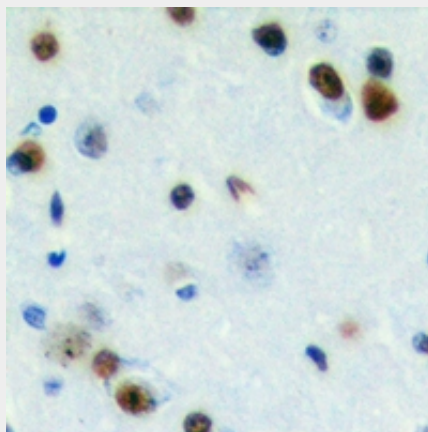
Provided below are standard protocols that you may find useful for product applications.

- [Western Blot](#)
- [Blocking Peptides](#)
- [Dot Blot](#)
- [Immunohistochemistry](#)
- [Immunofluorescence](#)
- [Immunoprecipitation](#)
- [Flow Cytometry](#)
- [Cell Culture](#)

Anti-ZC3H7B Antibody - Images



Western blot analysis of ZC3H7B expression in U87MG (A), PC3 (B), HEK293T (C), HeLa (D), CT26 (E), PC12 (F) whole cell lysates.



Immunohistochemical analysis of ZC3H7B staining in human brain formalin fixed paraffin embedded tissue section. The section was pre-treated using heat mediated antigen retrieval with sodium citrate buffer (pH 6.0). The section was then incubated with the antibody at room temperature and detected using an HRP conjugated compact polymer system. DAB was used as the chromogen. The section was then counterstained with haematoxylin and mounted with DPX.

Anti-ZC3H7B Antibody - Background

KLH-conjugated synthetic peptide encompassing a sequence within the C-term region of human ZC3H7B. The exact sequence is proprietary.