

**Anti-SERINC1 Antibody**  
Rabbit polyclonal antibody to SERINC1  
Catalog # AP60730

**Specification**

---

**Anti-SERINC1 Antibody - Product Information**

Application	WB
Primary Accession	<a href="#">O9NRX5</a>
Other Accession	<a href="#">O9OZI8</a>
Reactivity	Human, Mouse, Rat, Bovine
Host	Rabbit
Clonality	Polyclonal
Calculated MW	50495

**Anti-SERINC1 Antibody - Additional Information**

**Gene ID** 57515

**Other Names**

KIAA1253; TDE1L; TDE2; Serine incorporator 1; Tumor differentially expressed protein 1-like; Tumor differentially expressed protein 2

**Target/Specificity**

Recognizes endogenous levels of SERINC1 protein.

**Dilution**

WB~~WB (1/500 - 1/1000)

**Format**

Liquid in 0.42% Potassium phosphate, 0.87% Sodium chloride, pH 7.3, 30% glycerol, and 0.09% (W/V) sodium azide.

**Storage**

Store at -20 °C. Stable for 12 months from date of receipt

**Anti-SERINC1 Antibody - Protein Information**

**Name** SERINC1

**Synonyms** KIAA1253, TDE1L, TDE2

**Function**

Enhances the incorporation of serine into phosphatidylserine and sphingolipids.

**Cellular Location**

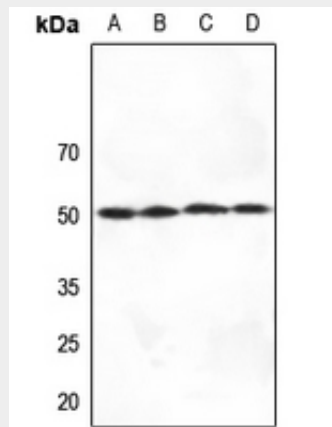
Endoplasmic reticulum membrane {ECO:0000250|UniProtKB:Q7TNK0}; Multi-pass membrane protein {ECO:0000250|UniProtKB:Q7TNK0}

## Anti-SERINC1 Antibody - Protocols

Provided below are standard protocols that you may find useful for product applications.

- [Western Blot](#)
- [Blocking Peptides](#)
- [Dot Blot](#)
- [Immunohistochemistry](#)
- [Immunofluorescence](#)
- [Immunoprecipitation](#)
- [Flow Cytometry](#)
- [Cell Culture](#)

## Anti-SERINC1 Antibody - Images



Western blot analysis of SERINC1 expression in A549 (A), MCF7 (B), mouse brain (C), rat brain (D) whole cell lysates.

## Anti-SERINC1 Antibody - Background

KLH-conjugated synthetic peptide encompassing a sequence within the C-term region of human SERINC1. The exact sequence is proprietary.