

**Anti-BCA3 Antibody**  
Rabbit polyclonal antibody to BCA3  
Catalog # AP60729

**Specification**

---

**Anti-BCA3 Antibody - Product Information**

Application	WB
Primary Accession	<a href="#">O9NQ31</a>
Other Accession	<a href="#">O9JIR5</a>
Reactivity	Human, Mouse, Rat, Monkey
Host	Rabbit
Clonality	Polyclonal
Calculated MW	23114

**Anti-BCA3 Antibody - Additional Information**

**Gene ID** 56672

**Other Names**

BCA3; C11orf17; A-kinase-interacting protein 1; Breast cancer-associated gene 3 protein; PKA-interacting protein; Proline-rich protein BCA3

**Target/Specificity**

Recognizes endogenous levels of BCA3 protein.

**Dilution**

WB~~WB (1/500 - 1/1000), IH (1/100 - 1/200)

**Format**

Liquid in 0.42% Potassium phosphate, 0.87% Sodium chloride, pH 7.3, 30% glycerol, and 0.09% (W/V) sodium azide.

**Storage**

Store at -20 °C. Stable for 12 months from date of receipt

**Anti-BCA3 Antibody - Protein Information**

**Name** AKIP1

**Synonyms** BCA3, C11orf17

**Function**

Enhances NF-kappa-B transcriptional activity by regulating the nuclear localization of the NF-kappa-B subunit RELA and promoting the phosphorylation of RELA by PRKACA. Regulates the effect of the cAMP-dependent protein kinase signaling pathway on the NF-kappa-B activation cascade.

**Cellular Location**

Nucleus. Note=Locates to punctate spots

#### Tissue Location

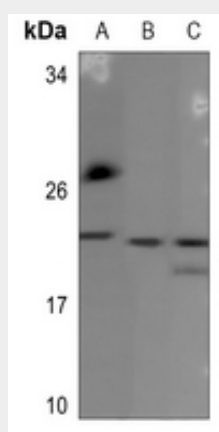
Expressed at high levels in adult heart and at lower levels in brain, testis, ovary and skeletal muscle. Up-regulated in some breast cancer cell lines. Isoform 1 and isoform 3 are expressed in fetal brain.

#### Anti-BCA3 Antibody - Protocols

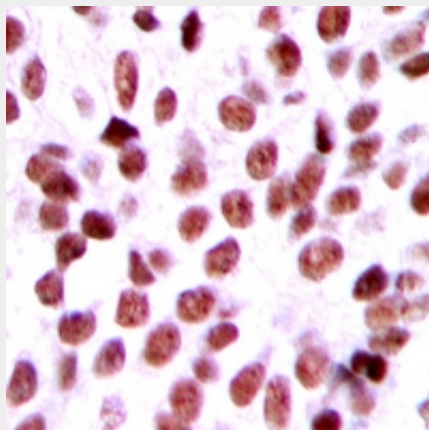
Provided below are standard protocols that you may find useful for product applications.

- [Western Blot](#)
- [Blocking Peptides](#)
- [Dot Blot](#)
- [Immunohistochemistry](#)
- [Immunofluorescence](#)
- [Immunoprecipitation](#)
- [Flow Cytometry](#)
- [Cell Culture](#)

#### Anti-BCA3 Antibody - Images



Western blot analysis of BCA3 expression in Jurkat (A), mouse spleen (B), rat spleen (C) whole cell lysates.



Immunohistochemical analysis of BCA3 staining in human breast cancer formalin fixed paraffin

embedded tissue section. The section was pre-treated using heat mediated antigen retrieval with sodium citrate buffer (pH 6.0). The section was then incubated with the antibody at room temperature and detected using an HRP conjugated compact polymer system. DAB was used as the chromogen. The section was then counterstained with haematoxylin and mounted with DPX.

#### **Anti-BCA3 Antibody - Background**

KLH-conjugated synthetic peptide encompassing a sequence within the center region of human BCA3. The exact sequence is proprietary.