

Anti-C/EBP gamma Antibody
Rabbit polyclonal antibody to C/EBP gamma
Catalog # AP60723

Specification

Anti-C/EBP gamma Antibody - Product Information

Application	WB, IF
Primary Accession	P53567
Other Accession	P53568
Reactivity	Human, Mouse, Rat, Chicken, Bovine
Host	Rabbit
Clonality	Polyclonal
Calculated MW	16408

Anti-C/EBP gamma Antibody - Additional Information

Gene ID 1054

Other Names

CCAAT/enhancer-binding protein gamma; C/EBP gamma

Target/Specificity

Recognizes endogenous levels of C/EBP gamma protein.

Dilution

WB~~WB (1/500 - 1/1000), IH (1/100 - 1/200), IF/IC (1/100 - 1/500)

IF~~WB (1/500 - 1/1000), IH (1/100 - 1/200), IF/IC (1/100 - 1/500)

Format

Liquid in 0.42% Potassium phosphate, 0.87% Sodium chloride, pH 7.3, 30% glycerol, and 0.09% (W/V) sodium azide.

Storage

Store at -20 °C. Stable for 12 months from date of receipt

Anti-C/EBP gamma Antibody - Protein Information

Name CEBPG

Function

Transcription factor that binds to the promoter and the enhancer regions of target genes. Binds to the enhancer element PRE-I (positive regulatory element-I) of the IL-4 gene (PubMed:7665092). Binds to the promoter and the enhancer of the immunoglobulin heavy chain. Binds to GPE1, a cis-acting element in the G-CSF gene promoter.

Cellular Location

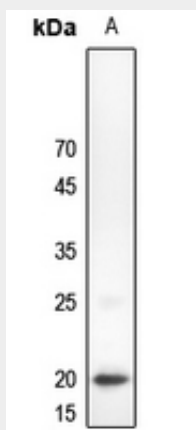
Nucleus {ECO:0000250|UniProtKB:P53568}.

Anti-C/EBP gamma Antibody - Protocols

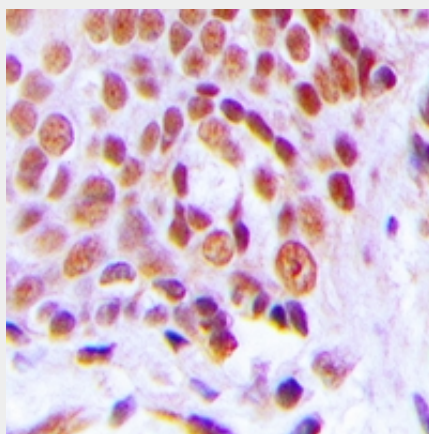
Provided below are standard protocols that you may find useful for product applications.

- [Western Blot](#)
- [Blocking Peptides](#)
- [Dot Blot](#)
- [Immunohistochemistry](#)
- [Immunofluorescence](#)
- [Immunoprecipitation](#)
- [Flow Cytometry](#)
- [Cell Culture](#)

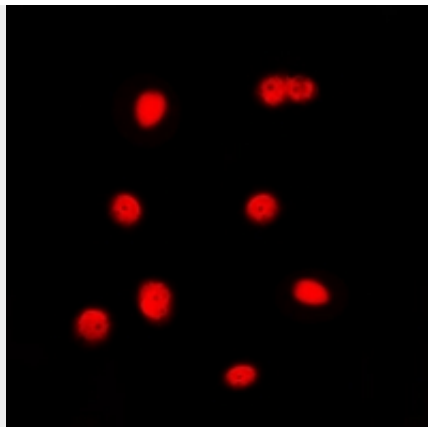
Anti-C/EBP gamma Antibody - Images



Western blot analysis of C/EBP gamma expression in mouse lung (A) whole cell lysates.



Immunohistochemical analysis of C/EBP gamma staining in human breast cancer formalin fixed paraffin embedded tissue section. The section was pre-treated using heat mediated antigen retrieval with sodium citrate buffer (pH 6.0). The section was then incubated with the antibody at room temperature and detected using an HRP conjugated compact polymer system. DAB was used as the chromogen. The section was then counterstained with haematoxylin and mounted with DPX.



Immunofluorescent analysis of C/EBP gamma staining in Jurkat cells. Formalin-fixed cells were permeabilized with 0.1% Triton X-100 in TBS for 5-10 minutes and blocked with 3% BSA-PBS for 30 minutes at room temperature. Cells were probed with the primary antibody in 3% BSA-PBS and incubated overnight at 4 °C in a humidified chamber. Cells were washed with PBST and incubated with a DyLight 594-conjugated secondary antibody (red) in PBS at room temperature in the dark.

Anti-C/EBP gamma Antibody - Background

KLH-conjugated synthetic peptide encompassing a sequence within the center region of human C/EBP gamma. The exact sequence is proprietary.